

# TECO CABLE ENTRY SYSTEMS

Catalogue  
**2025**

TECO  
you design,  
we connect

**In TECO, we place the customer at the heart of our business. We listen to their needs and work to offer customized solutions that facilitate their work and improve the efficiency of their industrial plants.**

**This commitment is the reason for the development of the new TECO cable entry systems, a range of products fully compatible with our cables and designed to expand our offer of integrated solutions.**

TECO cable entry systems are designed to meet all cable management needs, ensuring quick and safe installation.

Thanks to our experience in the industrial automation, we have developed cable entry systems that perfectly integrate with any type of cable, ensuring a simpler and more efficient cable management within the plant.

Our range of cable entry systems has been optimized to offer the highest versatility with a reduced number of product codes, thus simplifying the selection and management of TECO solutions: with fewer codes, we can cover a wider range of applications, reducing complexity and improving efficiency in order and stock management.

Choosing TECO means relying on a partner who deeply understands the industry and is always ready to support customers with innovative solutions and an excellent service.

# INDEX

---

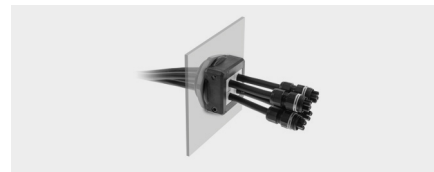
## 01 SPLITTABLE FRAMES

p. 01



Splittable frames

p. 02



Circular splittable frames

p. 07



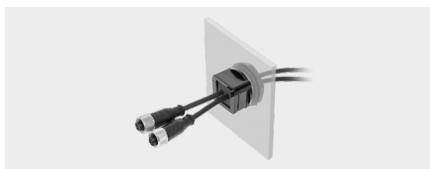
Grommets for splittable frames

p. 09



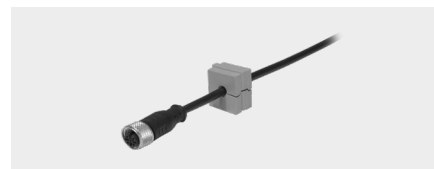
Light splittable frames

p. 21



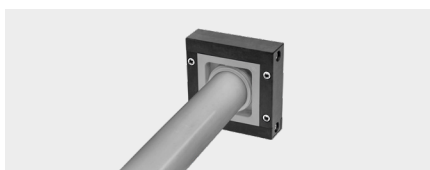
Light circular splittable frames

p. 22



Grommets for light circular splittable frames

p. 26



XL splittable frames

p. 30



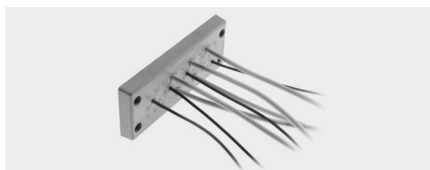
Accessories for splittable frames

p. 32

---

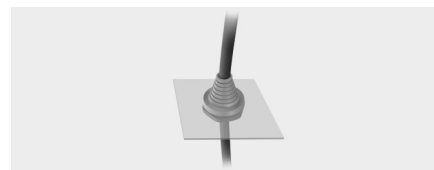
## 02 MEMBRANE FRAMES

p. 39



Double membrane frames

p. 40



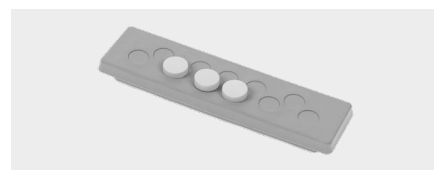
Pyramidal round frames

p. 45



Membrane plates

p. 46



Accessories for membrane frames

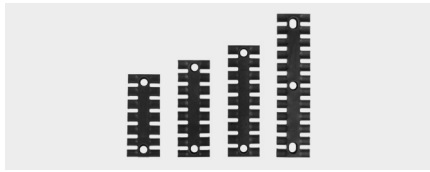
p. 47



---

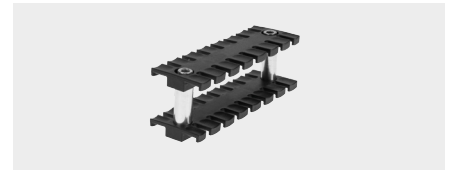
## 03 CABLE FIXINGS

p. 49



Cable combs

p. 50



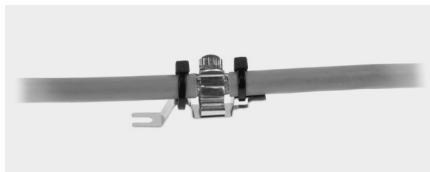
Accessories for cable combs

p. 52

---

## 04 EMC SHIELDING

p. 53



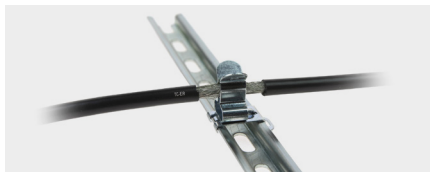
Screw mounting shield clamp

p. 54



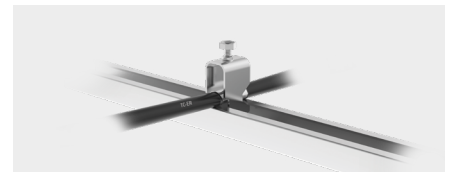
Multiple shield clamps

p. 59



Shield clamps for DIN rail

p. 60



C-bar shield clamps

p. 65



Bar mounting shield clamps

p. 66



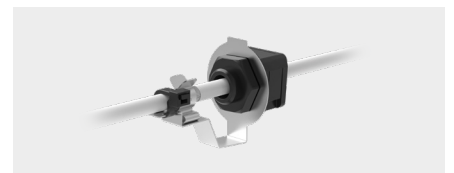
PCB shield clamps

p. 69



Flexible earthing straps

p. 70



EMC accessories

p. 71

---

## CODE INDEX

p. 73



---

**01**

# SPLITTABLE FRAMES





# TPD

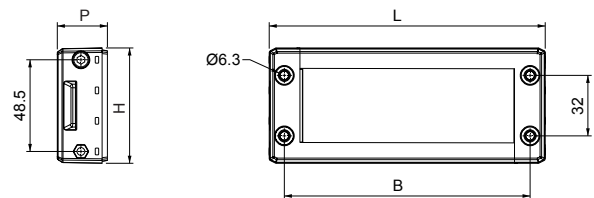
PATENTED

## DESCRIPTION

TPD splittable frame allows cables with and without connectors, up to 35 mm section, to pass through cabinets. Once assembled, the system guarantees cable strain relief and high IP protections. The ATEX EX version can be installed in 2 and 22 areas according to IEC 60079-10.



## DIMENSIONS



## FEATURES

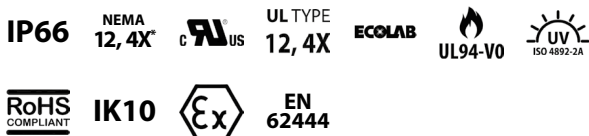
Material: PP + GF

Temperature: -40°C +155°C (static)

Gasket: Overmolded

Model	Part Number	ATEX EX Code	Dimensions (L) x (H) x (P) [mm]	Max Opening [mm]	Max. No. of Cables	Packaging
TPD Q	53641	53642	74 x 61 x 26.5	40 x 39	16	
TPD 10	53583	53584	99 x 61 x 26.5	63 x 39	24	10
TPD 16	53586	53587	120 x 61 x 26.5	86 x 39	32	
TPD 24	53593	53594	146 x 61 x 26.5	112 x 39	40	

## APPROVALS



## RELATED PRODUCTS

TGP	p. 09	TGG	p. 15	TGG JH	p. 19
TGP E	p. 10	TGG A	p. 20	TPD H	p. 33
TGP F	p. 14	TGG S	p. 17	TCD	p. 35
TGPS	p. 12	TGG SM	p. 18	TGA	p. 37
TGP SM	p. 13	TGG P	p. 16		
TGP P	p. 11	TGG J	p. 19		



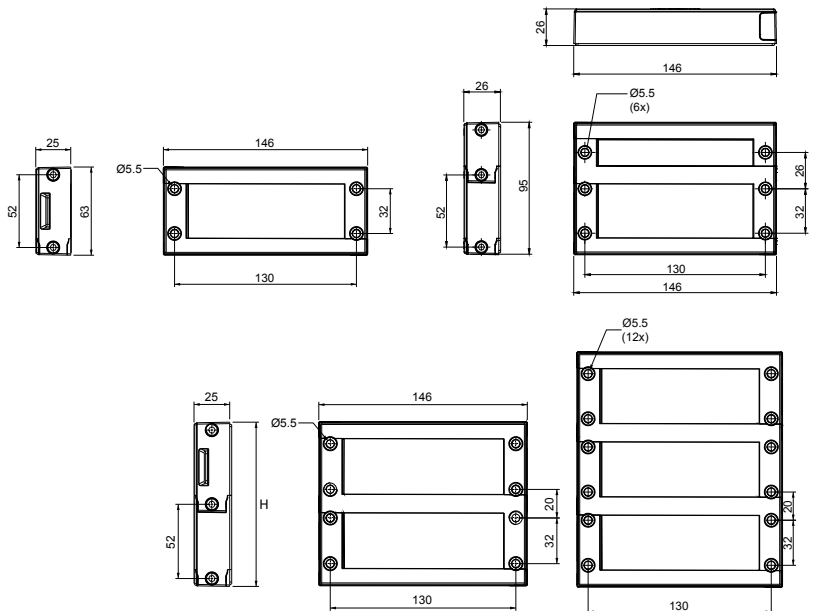
# TPD 24M TPD 24-15

PATENTED

## DESCRIPTION

TPD 24M and 24-15 modular splittable frames allows cables with and without connectors, up to 35 mm section, to pass through cabinets.

## DIMENSIONS



## FEATURES

Material: PP + GF  
Temperature: -40°C +155°C (static)  
Gasket: Included

Model	Part Number	Dimensions (L) x (H) x (P) [mm]	Max Opening [mm]	Max. No. of Cables	Packaging
TPD 24M	53606	146 x 63 x 25	114 x 40	40	10
TPD 24-15	53595	146 x 95 x 26	114 x 70	60	10
TPD 24M2	53598	146 x 115 x 25	114 x 92	80	1
TPD 24M3	53599	146 x 166 x 25	114 x 144	120	1

## APPROVALS



## RELATED PRODUCTS

TGP	p. 09	TGG	p. 15	TGG JH	p. 19
TGP E	p. 10	TGG A	p. 20	TPD H	p. 33
TGP F	p. 14	TGG S	p. 17	TCD	p. 35
TGPS	p. 12	TGG SM	p. 18	TGA	p. 37
TGP SM	p. 13	TGG P	p. 16		
TGP P	p. 11	TGG J	p. 19		



## TPD 16M

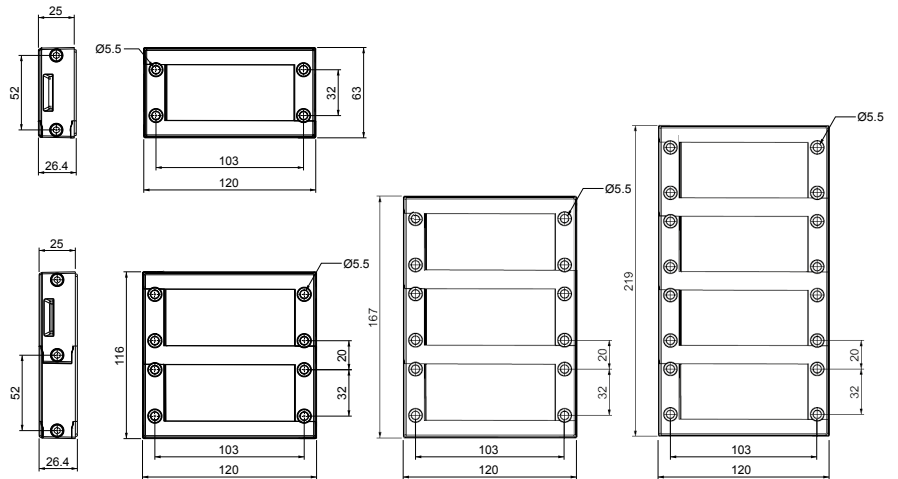
PATENTED

### DESCRIPTION

TPD 16M modular splittable frame allows cables with and without connectors, up to 35 mm section, to pass through cabinets.



### DIMENSIONS



### FEATURES

Material: PP + GF

Temperature: -40°C +155°C (static)

Gasket: Included

Model	Part Number	Dimensions (L) x (H) x (P) [mm]	Max Opening [mm]	Max. No. of Cables	Packaging
TPD 16M	53591	120 x 63 x 25	86 x 40	32	10
TPD 16M2	53588	120 x 115 x 25	86 x 92	64	1
TPD 16M3	53589	120 x 167 x 25	86 x 144	96	1
TPD 16M4	53590	120 x 219 x 25	86 x 196	128	1

### APPROVALS



### RELATED PRODUCTS

TGP	p. 09	TGP P	p. 11	TGG P	p. 16
TGP E	p. 10	TGG	p. 15	TGG J	p. 19
TGP F	p. 14	TGG A	p. 20	TGG JH	p. 19
TGP S	p. 12	TGG S	p. 17	TPD H	p. 33
TGP SM	p. 13	TGG SM	p. 18	TCD	p. 35



# TPD 24-90

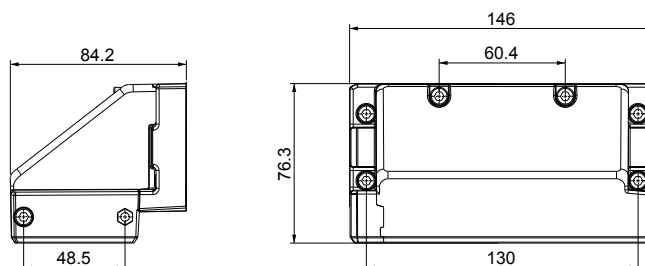
PATENTED



## DESCRIPTION

TPD 24-90 splittable frame allow cables with and without connectors to pass through cabinets with 90° entry. Once assembled, the system guarantees cable strain relief and high IP protections.

## DIMENSIONS



## FEATURES

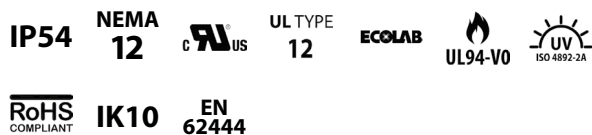
Material: PP + GF

Temperature: -40°C +155°C (static)

Gasket: Overmolded

Model	Part Number	Dimensions (L) x (H) x (P) [mm]	Max Opening [mm]	Max. No. of Cables	Packaging
TPD 24-90	53596	146 x 76.3 x 84.2	112 x 39	40	1

## APPROVALS



## RELATED PRODUCTS

TGP	p. 09	TGP P	p. 11	TGG P	p. 16
TGP E	p. 10	TGG	p. 15	TGG J	p. 19
TGP F	p. 14	TGG A	p. 20	TGG JH	p. 19
TGP S	p. 12	TGG S	p. 17	TPD H	p. 33
TGP SM	p. 13	TGG SM	p. 18	TCD	p. 35



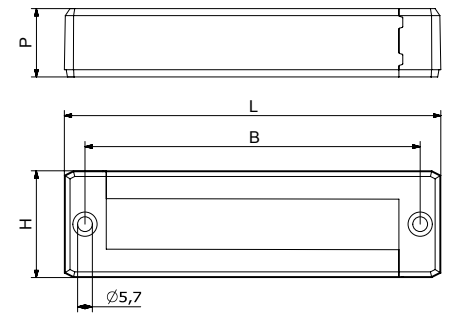
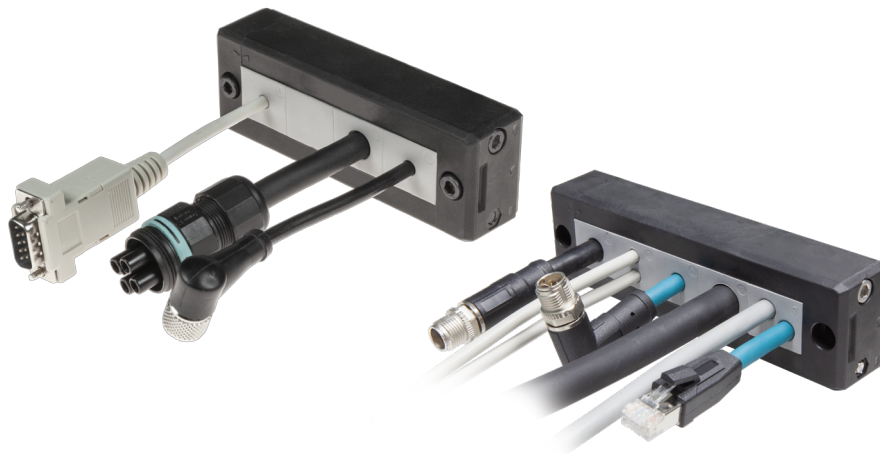
## TPD L

PATENTED

### DESCRIPTION

TPD L in line splittable frame allows cables with and without connectors, up to 17 mm section, to pass through cabinets. Once assembled, the system guarantees cable strain relief and high IP protections. The ATEX EX version can be installed in 2 and 22 areas according to IEC 60079-10.

### DIMENSIONS



### FEATURES

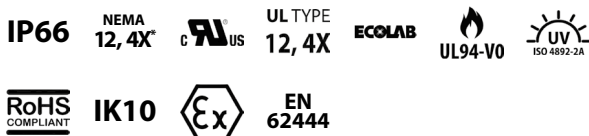
Material: PP + GF

Temperature: -40°C +155°C (static)

Gasket: Overmolded

Model	Part Number	ATEX EX Code	Dimensions (L) x (H) x (P) [mm]	Max Opening [mm]	Max. No. of Cables	Packaging
TPD L2	53633	53637	74 x 41 x 26	40 x 18	8	10
TPD L3	53634	53638	99 x 41 x 26	63 x 18	12	
TPD L4	53635	53639	120 x 41 x 26	86 x 18	16	
TPD L5	53636	53640	146 x 41 x 26	112 x 18	20	

### APPROVALS



### RELATED PRODUCTS

TGP	p. 09	TGP SM	p. 13
TGP E	p. 10	TGP P	p. 11
TGP F	p. 14	TCD	p. 35
TGPS	p. 12		



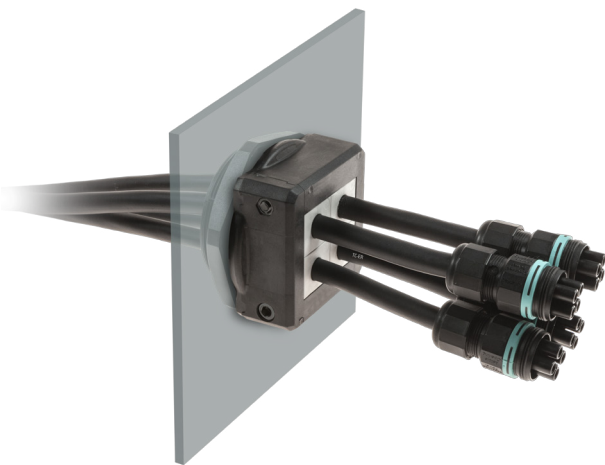


# TPD RH

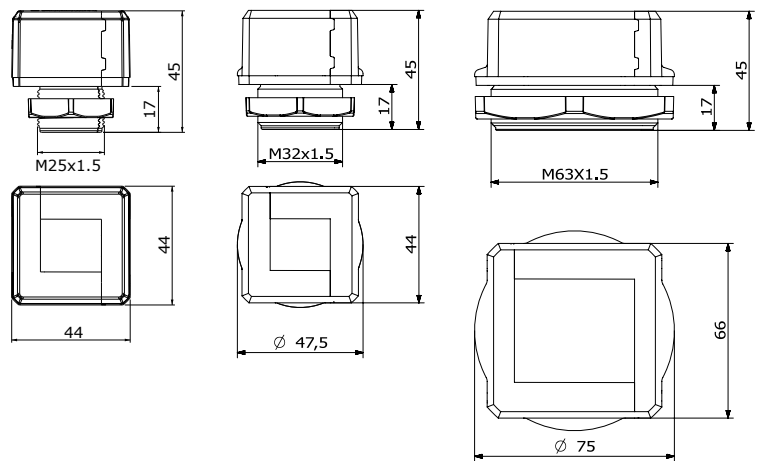
PATENTED

## DESCRIPTION

TPD RH round metrical threaded splittable frame allows cables with and without connectors, up to 35 mm section, to pass through cabinets. The ATEX EX version can be installed in 2 and 22 areas according to IEC 60079-10.



## DIMENSIONS



## FEATURES

Material: PP + GF

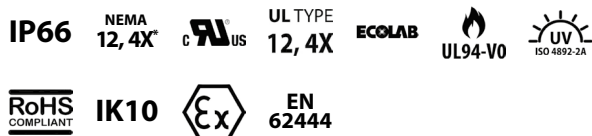
Temperature: -40°C +155°C (static)

Gasket: Included

Locknut: Included

Model	Part Number	ATEX EX Code	Max Opening [mm]	Thread	Max. No. of Cables	Packaging
TPD RH 25	53664	53667	25.5	M25	4	10
TPD RH 32	53665	53668	32.5	M32	4	
TPD RH 63	53666	53669	63.5	M63	16	

## APPROVALS



## RELATED PRODUCTS

TGP	p. 09	TGP P	p. 11	TGG P	p. 16
TGP E	p. 10	TGG	p. 15	TGG J	p. 19
TGP F	p. 14	TGG A	p. 20	TGG JH	p. 19
TGPS	p. 12	TGG S	p. 17		
TGP SM	p. 13	TGG SM	p. 18		



# TPD RH50-90

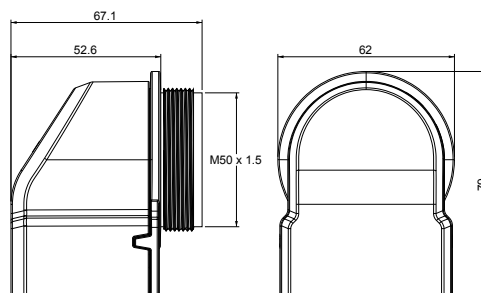
PATENTED



## DESCRIPTION

TPD RH50-90 round metrical threaded splittable frame allows cables with and without connectors, up to 35 mm section, to pass through cabinets with 90° entry.

## DIMENSIONS



## FEATURES

Material: PA66

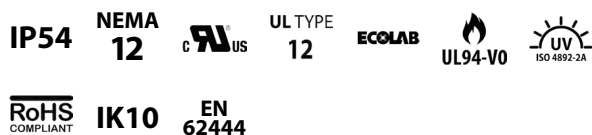
Temperature: -40°C +130°C (static)

Gasket: Included

Locknut: Included

Model	Part Number	Dimensions (L) x (H) x (P) [mm]	Max Opening [mm]	Thread	Max. No. of Cables	Packaging
TPD RH50-90	53670	62 x 79 x 67.1	50.5	M50	16	10

## APPROVALS



## RELATED PRODUCTS

TGP	p. 09	TGP P	p. 11	TGG P	p. 16
TGP E	p. 10	TGG	p. 15	TGG J	p. 19
TGP F	p. 14	TGG A	p. 20	TGG JH	p. 19
TGPS	p. 12	TGG S	p. 17		
TGP SM	p. 13	TGG SM	p. 18		

# SINGLE, DOUBLE, QUADRUPLE SMALL GROMMETS



# TGP

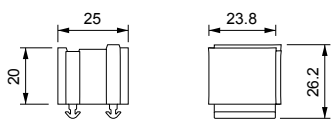
PATENTED

## DESCRIPTION

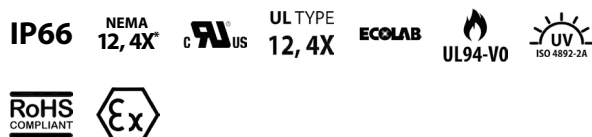
TGP grommets allow cables, up to 17 mm section, to be routed inside TPD series. The ATEX EX version can be installed in 2 and 22 areas according to IEC 60079-10.



## DIMENSIONS



## APPROVALS



## RELATED PRODUCTS

TPD	p. 02	TPD 16M	p. 04
TPD 24M	p. 03	TPD L	p. 06
TPD 24-15	p. 03	TPD RH	p. 07
TPD 24-90	p. 05	TPD RH50-90	p. 08

## FEATURES

Material: TPE

Temperature: -40°C +110°C (static)

Model	Part Number	ATEX EX Code	Min. Cable Ø [mm]	Max. Cable Ø [mm]	Max. No. of Cables	Packaging
TGP 0	53223	53321	0	0	0	10
TGP 2	53239	53337	2	3	1	
TGP 3	53256	53353	3	4	1	
TGP 4	53258	53355	4	5	1	
TGP 5	53270	53367	5	6	1	
TGP 6	53272	53369	6	7	1	
TGP 7	53274	53371	7	8	1	
TGP 8	53276	53373	8	9	1	
TGP 9	53278	53375	9	10	1	
TGP 10	53225	53323	10	11	1	
TGP 11	53227	53325	11	12	1	
TGP 12	53229	53327	12	13	1	
TGP 13	53231	53329	13	14	1	
TGP 14	53233	53331	14	15	1	
TGP 15	53235	53333	15	16	1	
TGP 16	53237	53335	16	17	1	
TGP 2x2	53241	53339	2	2	2	
TGP 2x3	53243	53341	3	3	2	
TGP 2x4	53245	53343	4	4	2	
TGP 2x5	53247	53345	5	5	2	
TGP 2x6	53249	53347	6	6	2	
TGP 2x7	53251	53349	7	7	2	
TGP 2x8	53253	53351	8	8	2	
TGP 4x2	53260	53357	2	2	4	
TGP 4x3	53262	53359	3	3	4	
TGP 4x4	53264	53361	4	4	4	
TGP 4x5	53266	53363	5	5	4	
TGP 4x6	53268	53365	6	6	4	
TGP ASI	53280				1	
TGP 2xASI	53255				2	
TGP 0B	53224	53322	0	0	0	
TGP 2B	53240	53338	2	3	1	
TGP 3B	53257	53354	3	4	1	
TGP 4B	53259	53356	4	5	1	
TGP 5B	53271	53368	5	6	1	
TGP 6B	53273	53370	6	7	1	
TGP 7B	53275	53372	7	8	1	
TGP 8B	53277	53374	8	9	1	
TGP 9B	53279	53376	9	10	1	
TGP 10B	53226	53324	10	11	1	
TGP 11B	53228	53326	11	12	1	
TGP 12B	53230	53328	12	13	1	
TGP 13B	53232	53330	13	14	1	
TGP 14B	53234	53332	14	15	1	
TGP 15B	53236	53334	15	16	1	
TGP 16B	53238	53336	16	17	1	
TGP 2x2B	53242	53340	2	2	2	
TGP 2x3B	53244	53342	3	3	2	
TGP 2x4B	53246	53344	4	4	2	
TGP 2x5B	53248	53346	5	5	2	
TGP 2x6B	53250	53348	6	6	2	
TGP 2x7B	53252	53350	7	7	2	
TGP 2x8B	53254	53352	8	8	2	
TGP 4x2B	53261	53358	2	2	4	
TGP 4x3B	53263	53360	3	3	4	
TGP 4x4B	53265	53362	4	4	4	
TGP 4x5B	53267	53364	5	5	4	
TGP 4x6B	53269	53366	6	6	4	



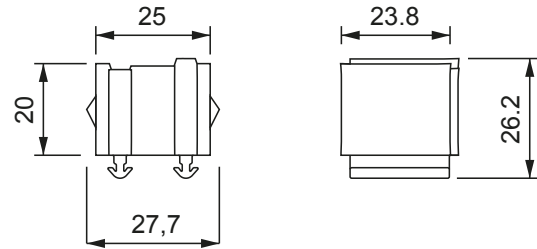
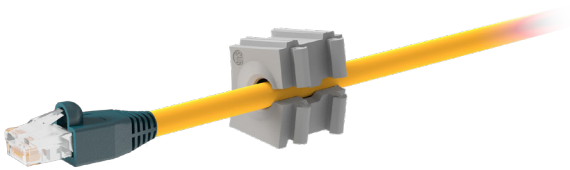
# TGP E

PATENTED

## DESCRIPTION

TGP E extended range grommets allow cables, from 3 to 15 mm section, to be routed inside TPD series.

## DIMENSIONS



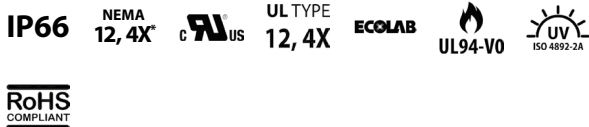
## FEATURES

Material: TPE

Temperature: -40°C +110°C (static)

Model	Part Number	Min. Cable Ø [mm]	Max. Cable Ø [mm]	Max. No. of Cables	Packaging
TGP E 3-6	53283	3	6	1	10
TGP E 6-9	53285	6	9	1	
TGP E 9-12	53287	9	12	1	
TGP E 12-15	53281	12	15	1	
TGP E 3-6B	53284	3	6	1	10
TGP E 6-9B	53286	6	9	1	
TGP E 9-12B	53288	9	12	1	
TGP E 12-15B	53282	12	15	1	

## APPROVALS



## RELATED PRODUCTS

TPD	p. 02	TPD 16M	p. 04
TPD 24M	p. 03	TPD L	p. 06
TPD 24-15	p. 03	TPD RH	p. 07
TPD 24-90	p. 05	TPD RH50-90	p. 08

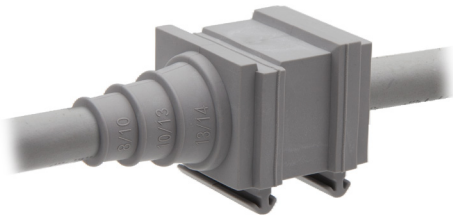


# TGP P

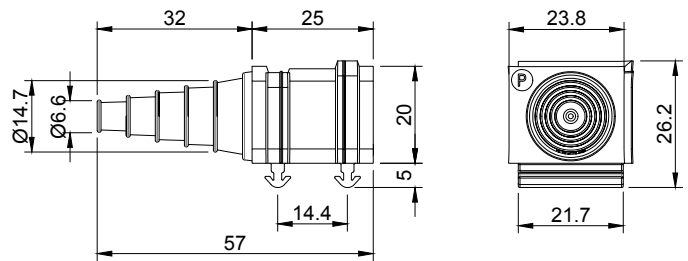
PATENTED

## DESCRIPTION

TGP P pyramidal grommets allow a single cable without connector, from 2 to 14 mm section, to be routed inside TPD series. The ATEX EX version can be installed in 2 and 22 areas according to IEC 60079-10.



## DIMENSIONS



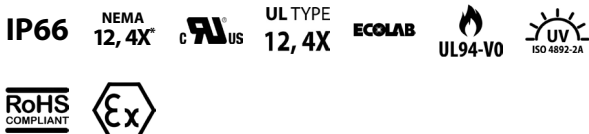
## FEATURES

Material: TPE

Temperature: -40°C +110°C (static)

Model	Part Number	ATEX EX Code	Min. Cable Ø [mm]	Max. Cable Ø [mm]	Max. No. of Cables	Packaging
TGP P	53435	53695	2	14	1	10
TGP PB	53436	53696	2	14	1	10

## APPROVALS



## RELATED PRODUCTS

TPD	p. 02	TPD 16M	p. 04
TPD 24M	p. 03	TPD L	p. 06
TPD 24-15	p. 03	TPD RH	p. 07
TPD 24-90	p. 05	TPD RH50-90	p. 08



## TGP S

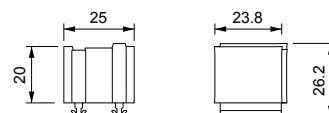
PATENTED

### DESCRIPTION

TGP S blind pierceable grommets allow a single cable without connector, up to 16,5 mm section, to be routed inside TPD series. The ATEX EX version can be installed in 2 and 22 areas according to IEC 60079-10.



### DIMENSIONS



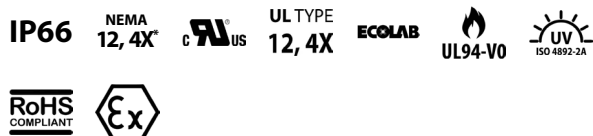
### FEATURES

Material: TPE

Temperature: -40°C +110°C (static)

Model	Part Number	ATEX EX Code	Min. Cable Ø [mm]	Max. Cable Ø [mm]	Max. No. of Cables	Packaging
TGP S 0	53437	53449	0	0	0	10
TGP S 1	53439	53451	2,5	7	1	
TGP S 2	53441	53453	4,5	10	1	
TGP S 3	53443	53455	7,5	12,5	1	
TGP S 4	53445	53457	9	14	1	
TGP S 5	53447	53459	12	16,5	1	
TGP S 0B	53438	53450	0	0	0	10
TGP S 1B	53440	53452	2,5	7	1	
TGP S 2B	53442	53454	4,5	10	1	
TGP S 3B	53444	53456	7,5	12,5	1	
TGP S 4B	53446	53458	9	14	1	
TGP S 5B	53448	53460	12	16,5	1	

### APPROVALS



### RELATED PRODUCTS

TPD	p. 02	TPD 16M	p. 04
TPD 24M	p. 03	TPD L	p. 06
TPD 24-15	p. 03	TPD RH	p. 07
TPD 24-90	p. 05	TPD RH50-90	p. 08

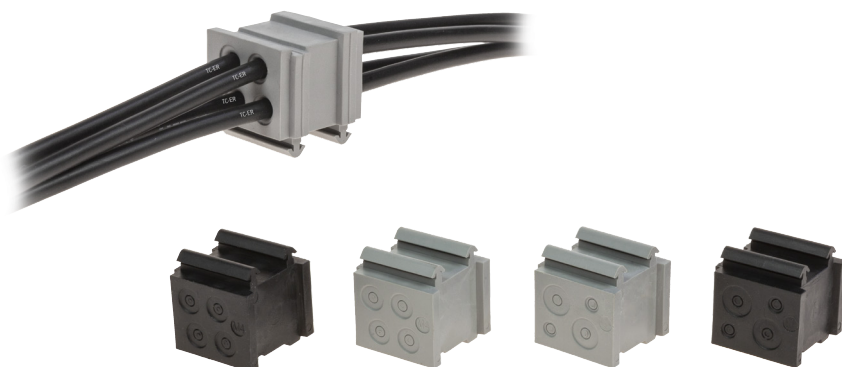


## TGP SM

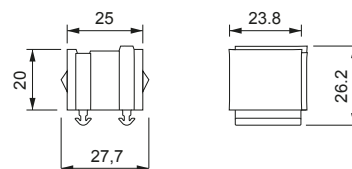
PATENTED

### DESCRIPTION

TGP SM multiple blind pierceable grommets allow cables without connector to be routed inside TPD series. The ATEX EX version can be installed in 2 and 22 areas according to IEC 60079-10.



### DIMENSIONS



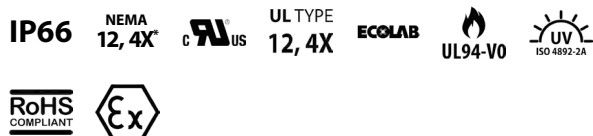
### FEATURES

Material: TPE

Temperature: -40°C +110°C (static)

Model	Part Number	ATEX EX Code	Max. Cable Ø [mm]	Max. No. of Cables	No. of Cables - Min/Max Cable Ø [mm]	Packaging
TGP SM 4	53471	53475	6	4	4 - 0 / 6	10
TGP SM 4-2	53472	53476	7	4	2 - 0 / 3 ; 2 - 0 / 7	
TGP SM 4B	53474	53478	6	4	4 - 0 / 6	10
TGP SM 4-2B	53473	53477	7	4	2 - 0 / 3 ; 2 - 0 / 7	

### APPROVALS



### RELATED PRODUCTS

TPD	p. 02	TPD 16M	p. 04
TPD 24M	p. 03	TPD L	p. 06
TPD 24-15	p. 03	TPD RH	p. 07
TPD 24-90	p. 05	TPD RH50-90	p. 08

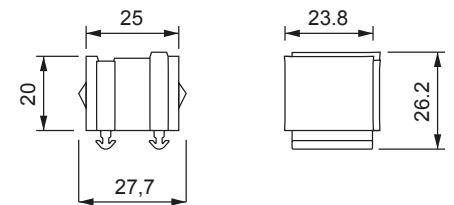


## DESCRIPTION

TGP F grommets feature metric and inch threads and can be installed on TPD series.



## DIMENSIONS



## FEATURES

Material: TPE - Brass insert

Temperature: -40°C +110°C (static)

Model	Part Number	Thread	Max. No. of Cables	Packaging
TGP F 1/8	53378	1/8"	1	
TGP F 1/4	53377	1/4"	1	
TGP F 8	53382	M8 × 0.5	1	10
TGP FV	53380	M12 × 1.5	-	
TGP F 12	53381	M12 × 1	1	
TGP F 16	53379	M16 × 1.5	1	

## APPROVALS



## RELATED PRODUCTS

TPD	p. 02	TPD 16M	p. 04
TPD 24M	p. 03	TPD L	p. 06
TPD 24-15	p. 03	TPD RH	p. 07
TPD 24-90	p. 05	TPD RH50-90	p. 08



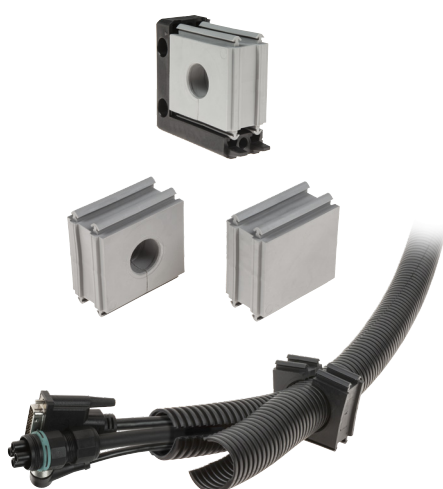


# TGG

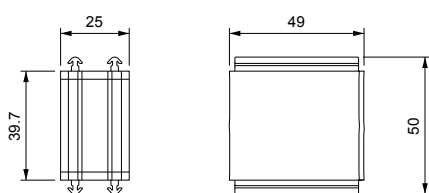
PATENTED

## DESCRIPTION

TGG grommets allow cables, from 17 to 35 mm section, to be routed inside TPD series. The ATEX EX version can be installed in 2 and 22 areas according to IEC 60079-10.



## DIMENSIONS



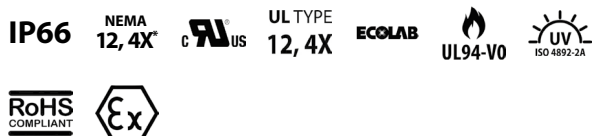
## FEATURES

Material: TPE

Temperature: -40°C +110°C (static)

Model	Part Number	ATEX EX Code	Min. Cable Ø [mm]	Max. Cable Ø [mm]	Max. No. of Cables	Pack-aging
TGG 0	53054	53113	0	0	0	
TGG 17	53056	53115	17	18	1	
TGG 18	53058	53117	18	19	1	
TGG 19	53060	53119	19	20	1	
TGG 20	53062	53121	20	21	1	
TGG 21	53064	53123	21	22	1	
TGG 22	53066	53125	22	23	1	
TGG 23	53068	53127	23	24	1	
TGG 24	53070	53129	24	25	1	
TGG 25	53072	53131	25	26	1	10
TGG 26	53074	53133	26	27	1	
TGG 27	53076	53136	27	28	1	
TGG 28	53078	53137	28	29	1	
TGG 29	53080	53139	29	30	1	
TGG 30	53082	53141	30	31	1	
TGG 31	53084	53143	31	32	1	
TGG 32	53086	53145	32	33	1	
TGG 33	53088	53147	33	34	1	
TGG 34	53090	53149	34	35	1	
TGG 0B	53055	53114	0	0	0	
TGG 17B	53057	53116	17	18	1	
TGG 18B	53059	53118	18	19	1	
TGG 19B	53061	53120	19	20	1	
TGG 20B	53063	53122	20	21	1	
TGG 21B	53065	53124	21	22	1	
TGG 22B	53067	53126	22	23	1	
TGG 23B	53069	53128	23	24	1	
TGG 24B	53071	53130	24	25	1	
TGG 25B	53073	53132	25	26	1	10
TGG 26B	53075	53134	26	27	1	
TGG 27B	53077	53135	27	28	1	
TGG 28B	53079	53138	28	29	1	
TGG 29B	53081	53140	29	30	1	
TGG 30B	53083	53142	30	31	1	
TGG 31B	53085	53144	31	32	1	
TGG 32B	53087	53146	32	33	1	
TGG 33B	53089	53148	33	34	1	
TGG 34B	53091	53150	34	35	1	

## APPROVALS



## RELATED PRODUCTS

TPD	p. 02	TPD 16M	p. 04
TPD 24M	p. 03	TPD RH	p. 07
TPD 24-15	p. 03	TPD RH50-90	p. 08
TPD 24-90	p. 05		

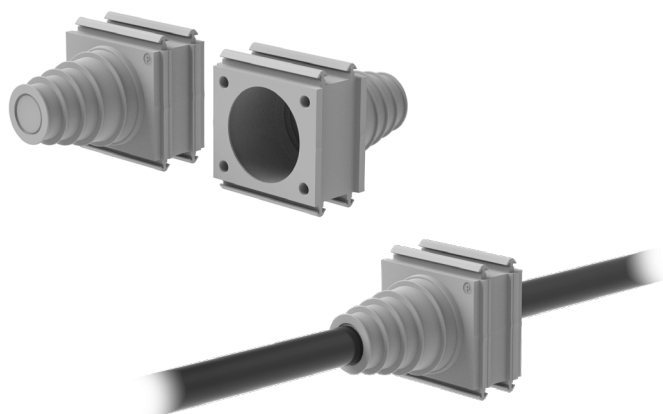


## TGG P

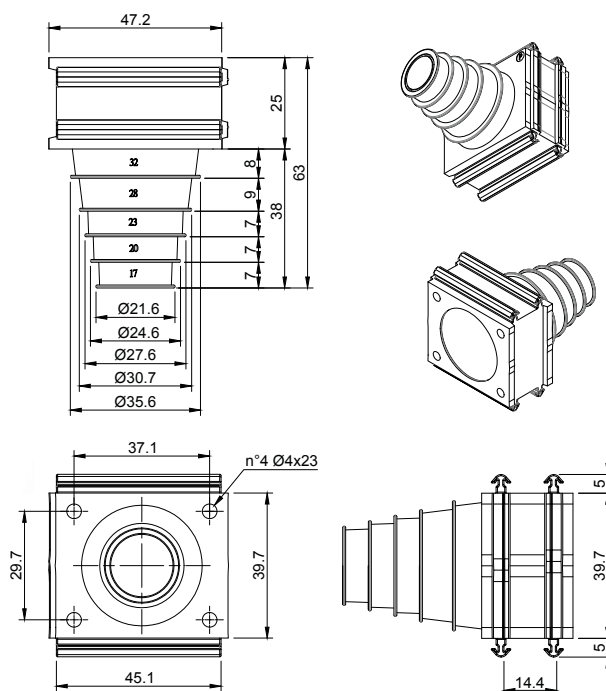
PATENTED

### DESCRIPTION

TGG P pyramidal grommets allow a single cable without connector, from 18 to 34 mm section, to be routed inside TPD series. The ATEX EX version can be installed in 2 and 22 areas according to IEC 60079-10.



### DIMENSIONS



### FEATURES

Material: TPE

Temperature: -40°C +110°C (static)

Model	Part Number	ATEX EX Code	Min. Cable Ø [mm]	Max. Cable Ø [mm]	Max. No. of Cables	Packaging
TGG P	53181	53183	18	34	1	10
TGG PB	53182	53184	18	34	1	10

### APPROVALS

IP66 NEMA 12, 4X C UL US ECOLAB UL94-V0 UV ISO 4892-2A RoHS COMPLIANT



### RELATED PRODUCTS

TPD	p. 02	TPD 16M	p. 04
TPD 24M	p. 03	TPD RH	p. 07
TPD 24-15	p. 03	TPD RH50-90	p. 08
TPD 24-90	p. 05		

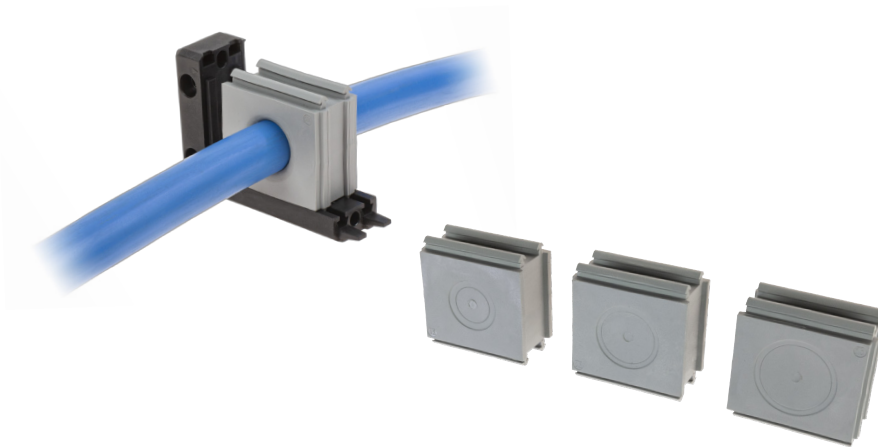


## TGG S

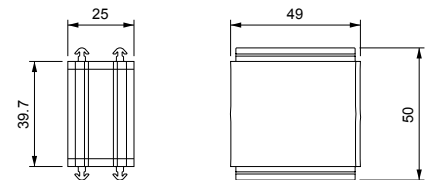
PATENTED

### DESCRIPTION

TGG S blind pierceable grommets allow a single cable without connector, up to 30 mm section, to be routed inside TPD series. The ATEX EX version can be installed in 2 and 22 areas according to IEC 60079-10.



### DIMENSIONS



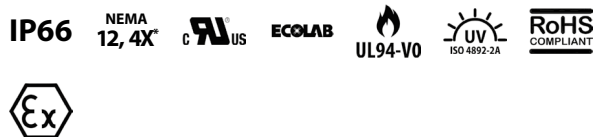
### FEATURES

Material: TPE

Temperature: -40°C +110°C (static)

	Model	Part Number	ATEX EX Code	Min. Cable Ø [mm]	Max. Cable Ø [mm]	Max. No. of Cables	Packaging
■	TGG S 0	53185	53196	0	32	0	10
	TGG S 1	53187	53197	16	22	1	
	TGG S 2	53189	53199	23	26	1	
	TGG S 3	53191	53193	26	30	1	
■	TGG S 0B	53186	53194	0	32	0	10
	TGG S 1B	53188	53198	16	22	1	
	TGG S 2B	53190	53200	23	26	1	
	TGG S 3B	53192	53195	26	30	1	

### APPROVALS



### RELATED PRODUCTS

TPD	p. 02	TPD 16M	p. 04
TPD 24M	p. 03	TPD RH	p. 07
TPD 24-15	p. 03	TPD RH50-90	p. 08
TPD 24-90	p. 05		

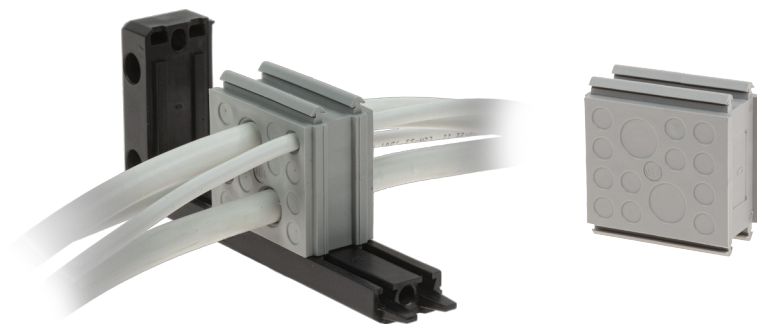


## TGG SM

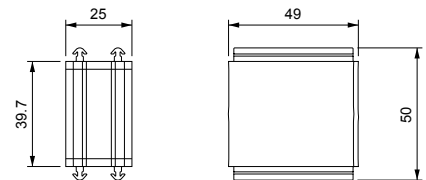
PATENTED

### DESCRIPTION

TGG SM multiple blind pierceable grommets allow cables without connector to be routed inside TPD series. The ATEX EX version can be installed in 2 and 22 areas according to IEC 60079-10.



### DIMENSIONS



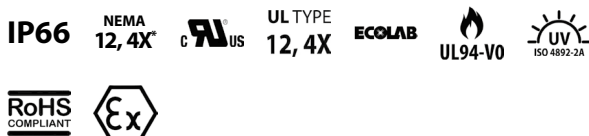
### FEATURES

Material: TPE

Temperature: -40°C +110°C (static)

Model	Part Number	ATEX EX Code	No. of Cables - Min/Max Cable Ø [mm]	Max. No. of Cables	Packaging
TGG SM 7	53205	53213	4 - max. 13.5 ; 2 - max. 5 ; 1 - max. 9.5	7	10
TGG SM 9	53207	53215	9 - max. 8.8	9	
TGG SM 14	53201	53209	12 - max. 6.5 ; 2 - max. 12	14	
TGG SM 15	53203	53211	15 - max. 7	15	
TGG SM 7B	53206	53214	4 - max. 13.5 ; 2 - max. 5 ; 1 - max. 9.5	7	10
TGG SM 9B	53208	53216	9 - max. 8.8	9	
TGG SM 14B	53202	53210	12 - max. 6.5 ; 2 - max. 12	14	
TGG SM 15B	53204	53212	15 - max. 7	15	

### APPROVALS



### RELATED PRODUCTS

TPD	p. 02	TPD 16M	p. 04
TPD 24M	p. 03	TPD RH	p. 07
TPD 24-15	p. 03	TPD RH50-90	p. 08
TPD 24-90	p. 05		



# TGG J TGG JH

PATENTED

## DESCRIPTION

TGG J grommets allow to install panel sockets directly onto the TPD series chassis.



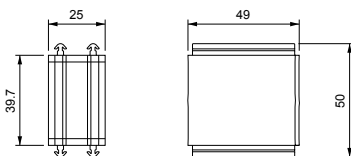
## FEATURES

Material: TPE - inserto PP + GF

Temperature: -40°C +110°C (static) / -40°C +55°C (static)

Model	Part Number	Note	Packaging
TGG J 12	53151	M12	
TGG J 22	53152	22 mm d. panel sockets	
TGG J 25	53153	M25	
TGG J 2xUSB2.0	53154	-	
TGG J FP23	53155	Flange M23	
TGG J FQ20	53156	38 mm square flange with hole for M15	
TGG J FQ27	53157	38 mm square flange with hole for M23	
TGG J HDMI	53158	-	1
TGG J RJ45cat.6	53159	-	
TGG J USB3.0	53160	-	
TGG J USB-C	53162	-	
TGG JH HDMI	53165	-	
TGG JH RJ45cat.6	53166	-	
TGG JH USB3.0	53167	-	
TGG JH USB-C	53168	-	

## DIMENSIONS



## APPROVALS



## RELATED PRODUCTS

TPD	p. 02	TPD 16M	p. 04
TPD 24M	p. 03	TPD RH	p. 07
TPD 24-15	p. 03	TPD RH50-90	p. 08
TPD 24-90	p. 05		



# TGG A

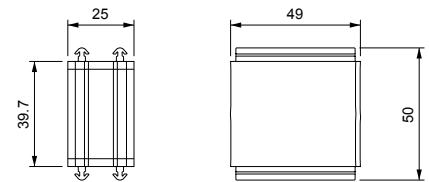
PATENTED

## DESCRIPTION

TGG A adapter grommets allow to install a small grommet within them.



## DIMENSIONS



## FEATURES

Material: TPE

Temperature: -40°C +110°C (static)

	Model	Part Number	Packaging
■	TGG A	53092	10
■	TGG AB	53093	10

## APPROVALS



## RELATED PRODUCTS

TPD	p. 02	TPD 16M	p. 04
TPD 24M	p. 03	TPD RH	p. 07
TPD 24-15	p. 03	TPD RH50-90	p. 08
TPD 24-90	p. 05		



## TPD Q

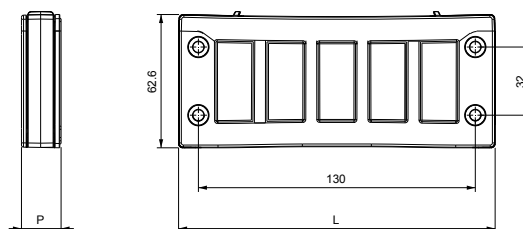
PATENTED

### DESCRIPTION

TPD Q splittable frame allows cables with and without connectors, up to 31 mm section, to pass through cabinets with an easy quick closing system.



### DIMENSIONS



### FEATURES

Material: PC + GF

Temperature: -40°C +155°C (static)

Gasket: Included

Model	Part Number	Dimensions (L) x (H) x (P) [mm]	Max Opening [mm]	Max. No. of Cables	Packaging
TPD QQ	53643	76.6 × 62.6 × 18.6	40 × 36	16	10
TPD 10Q	53585	100.6 × 62.6 × 18.6	63 × 36	24	
TPD 16Q	53592	124.6 × 62.6 × 18.6	86 × 36	32	
TPD 24Q	53607	148.6 × 62.6 × 18.6	112 × 36	40	

### APPROVALS



IK10

### RELATED PRODUCTS

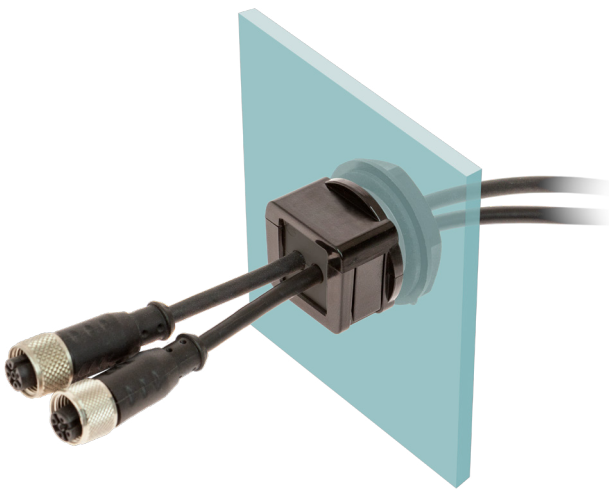
TGP LGH	p. 26	TGG SM LGH	p. 29
TGP S LGH	p. 27	TPD HQ	p. 33
TGG LGH	p. 28		



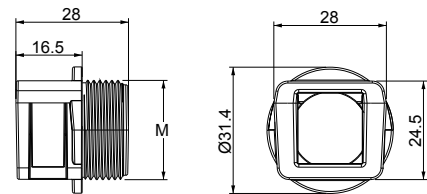
# TPD R

## DESCRIPTION

TPD R round metrical threaded splittable frame is particularly suitable for use with cables with connectors to replace cable glands.



## DIMENSIONS



## FEATURES

Material: PC

Temperature: -40°C +130°C (static)

Locknut: Included

Model	Part Number	Max Opening [mm]	Thread	Min. Cable Ø [mm]	Max. Cable Ø [mm]	Max. No. of Cables	Packaging
TPD R 20	53646	20.5	M20	2	14	4	10
TPD R 25	53648	25.5	M25	2	14	4	
TPD R 32	53650	32.5	M32	2	14	4	

## APPROVALS



## RELATED PRODUCTS

TGP LGH	p. 26
TGP S LGH	p. 27
TD	p. 34



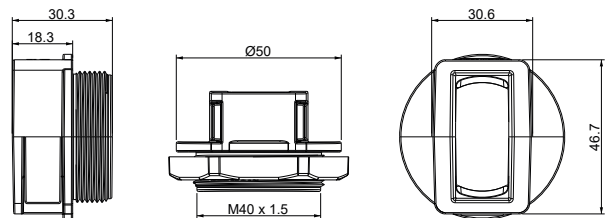


# TPD R 40

## DESCRIPTION

TPD R 40 round metrical threaded splittable frame is particularly suitable for use with cables with connectors to replace cable glands.

## DIMENSIONS



## FEATURES

Material: PC

Temperature: -40°C +130°C (static)

Locknut: Included

Model	Part Number	Max Opening [mm]	Thread	Min. Cable Ø [mm]	Max. Cable Ø [mm]	Max. No. of Cables	Packaging
TPD R 40	53652	40.5	M40	2	14	8	10

## APPROVALS



## RELATED PRODUCTS

TGP LGH	p. 26
TGP S LGH	p. 27
TD	p. 34

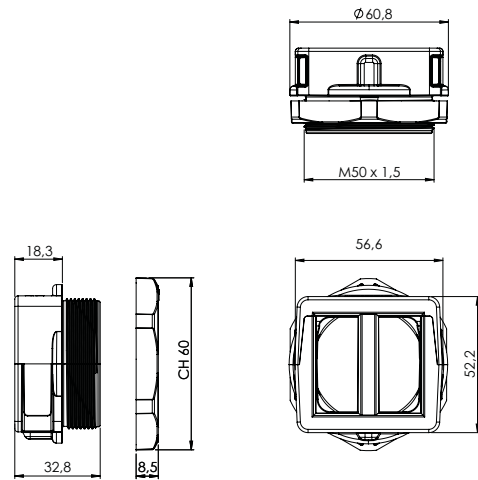
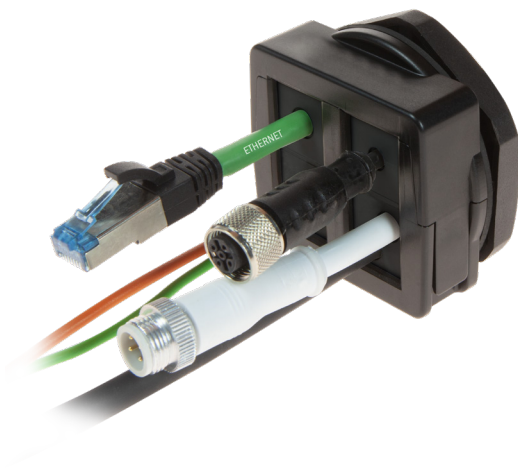


# TPD R 50

## DESCRIPTION

TPD R 50 round metrical threaded splittable frame is particularly suitable for use with cables with connectors to replace cable glands.

## DIMENSIONS



## FEATURES

Material: PC

Temperature: -40°C +130°C (static)

Locknut: Included

Model	Part Number	Max Opening [mm]	Thread	Min. Cable Ø [mm]	Max. Cable Ø [mm]	Max. No. of Cables	Packaging
TPD R 50	53654	50,5	M50	2	29	16	10

## APPROVALS



## RELATED PRODUCTS

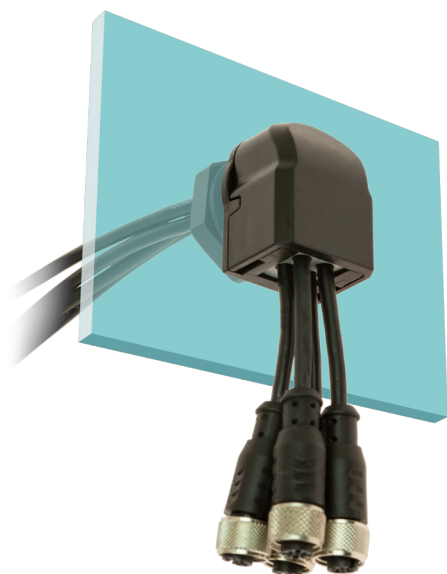
TGP LGH	p. 26	TGG SM LGH	p. 29
TGP S LGH	p. 27	TD	p. 34
TGG LGH	p. 28		



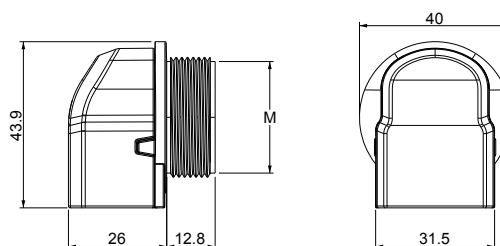
# TPD R 90

## DESCRIPTION

TPD R 90 round metrical threaded splittable frame is particularly suitable for use with cables with connectors to replace cable entry systems.



## DIMENSIONS



## FEATURES

Material: PC

Temperature: -40°C +130°C (static)

Locknut: Included

Model	Part Number	Max Opening [mm]	Thread	Min. Cable Ø [mm]	Max. Cable Ø [mm]	Max. No. of Cables	Packaging
<input type="checkbox"/> TPD R 90 32	53662	32.5	M32	2	14	4	10

## APPROVALS



## RELATED PRODUCTS

TGP LGH	p. 26
TGP S LGH	p. 27
TD	p. 34

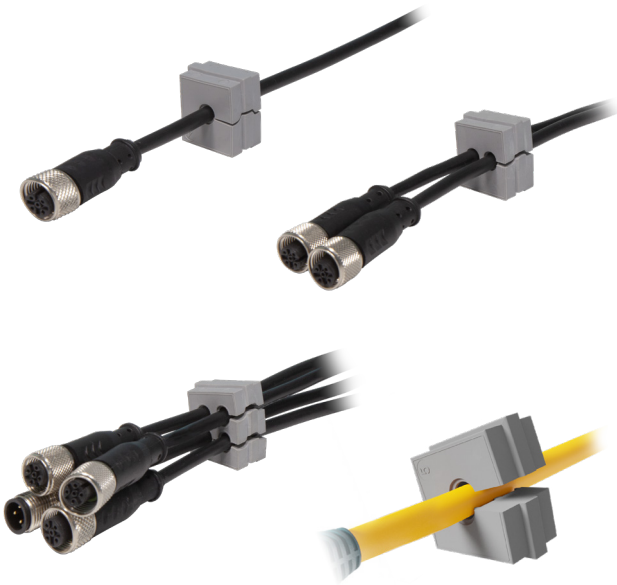
# SINGLE, DOUBLE, QUADRUPLE SMALL GROMMETS



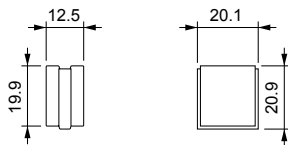
## TGP LGH

### DESCRIPTION

TGP LGH grommets allow cables, up to 14 mm section, to be routed inside TPD series.



### DIMENSIONS



### APPROVALS



### RELATED PRODUCTS

TPD Q p. 21  
TPD R p. 22  
TPD R 40 p. 23

TPD R 50 p. 24  
TPD R 90 p. 25

### FEATURES

Material: TPE

Temperature: -40°C +110°C (static)

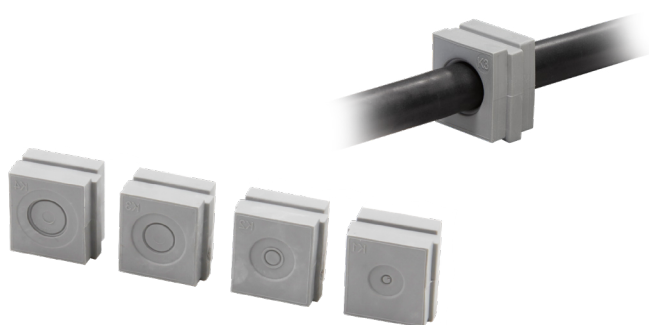
Model	Part Number	Min. Cable Ø [mm]	Max. Cable Ø [mm]	Max. No. of Cables	Pack-aging
TGP LGH 0	53383	0	0	0	
TGP LGH 2	53395	2	3	1	
TGP LGH 3	53409	3	4	1	
TGP LGH 4	53411	4	5	1	
TGP LGH 5	53425	5	6	1	
TGP LGH 6	53427	6	7	1	
TGP LGH 7	53429	7	8	1	
TGP LGH 8	53431	8	9	1	
TGP LGH 9	53433	9	10	1	
TGP LGH 10	53385	10	11	1	
TGP LGH 11	53387	11	12	1	
TGP LGH 12	53389	12	13	1	
TGP LGH 13	53391	13	14	1	
TGP LGH 14	53393	14	15	1	10
TGP LGH 2×2	53397	2	2	2	
TGP LGH 2×3	53399	3	3	2	
TGP LGH 2×4	53401	4	4	2	
TGP LGH 2×5	53403	5	5	2	
TGP LGH 2×6	53405	6	6	2	
TGP LGH 2×7	53407	7	7	2	
TGP LGH 4×2	53413	2	2	4	
TGP LGH 4×3	53415	3	3	4	
TGP LGH 4×4	53417	4	4	4	
TGP LGH 4×4,5	53418	4.5	4.5	4	
TGP LGH 4×5	53421	5	5	4	
TGP LGH 4×6	53423	6	6	4	
TGP LGH 0B	53384	0	0	0	
TGP LGH 2B	53396	2	3	1	
TGP LGH 3B	53410	3	4	1	
TGP LGH 4B	53412	4	5	1	
TGP LGH 5B	53426	5	6	1	
TGP LGH 6B	53428	6	7	1	
TGP LGH 7B	53430	7	8	1	
TGP LGH 8B	53432	8	9	1	
TGP LGH 9B	53434	9	10	1	
TGP LGH 10B	53386	10	11	1	
TGP LGH 11B	53388	11	12	1	
TGP LGH 12B	53390	12	13	1	
TGP LGH 13B	53392	13	14	1	
TGP LGH 14B	53394	14	15	1	10
TGP LGH 2×2B	53398	2	2	2	
TGP LGH 2×3B	53400	3	3	2	
TGP LGH 2×4B	53402	4	4	2	
TGP LGH 2×5B	53404	5	5	2	
TGP LGH 2×6B	53406	6	6	2	
TGP LGH 2×7B	53408	7	7	2	
TGP LGH 4×2B	53414	2	2	4	
TGP LGH 4×3B	53416	3	3	4	
TGP LGH 4×4,5B	53419	4	4	4	
TGP LGH 4×4B	53420	4.5	4.5	4	
TGP LGH 4×5B	53422	5	5	4	
TGP LGH 4×6B	53424	6	6	4	



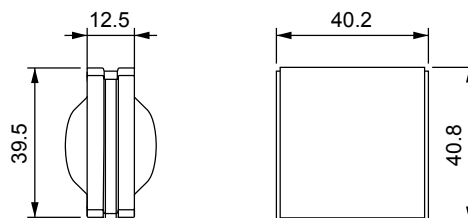
# TGP S LGH

## DESCRIPTION

TGP S LGH blind pierceable grommets allow a single cable without connector, up to 14 mm section, to be routed inside TPD series.



## DIMENSIONS



## FEATURES

Material: TPE

Temperature: -40°C +110°C (static)

Model	Part Number	Min. Cable Ø [mm]	Max. Cable Ø [mm]	Max. No. of Cables	Packaging
TGP S LGH 0	53461	0	0	0	10
TGP S LGH 1	53463	0	8	1	
TGP S LGH 2	53465	0	11	1	
TGP S LGH 3	53467	0	13	1	
TGP S LGH 4	53469	0	14	1	
TGP S LGH 0B	53462	0	0	0	10
TGP S LGH 1B	53464	0	8	1	
TGP S LGH 2B	53466	0	11	1	
TGP S LGH 3B	53468	0	13	1	
TGP S LGH 4B	53470	0	14	1	

## APPROVALS



## RELATED PRODUCTS

TPD Q p. 21      TPD R 40 p. 23      TPD R 90 p. 25  
 TPD R p. 22      TPD R 50 p. 24



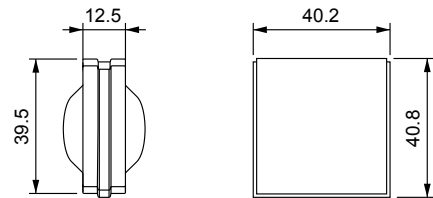
# TGG LGH

## DESCRIPTION

TGG LGH grommets allow cables, from 12 to 31 mm section, to be routed inside TPD series.



## DIMENSIONS



## FEATURES

Material: TPE

Temperature: -40°C +110°C (static)

Model	Part Number	Min. Cable Ø [mm]	Max. Cable Ø [mm]	Max. No. of Cables	Packaging
TGG LGH 0	53169	0	0	0	10
TGG LGH 13	53171	11.5	16	1	
TGG LGH 17	53173	16	20	1	
TGG LGH 21	53175	20	24	1	
TGG LGH 25	53177	24	28	1	
TGG LGH 29	53179	28	31	1	
TGG LGH 0B	53170	0	0	0	10
TGG LGH 13B	53172	11.5	16	1	
TGG LGH 17B	53174	16	20	1	
TGG LGH 21B	53176	20	24	1	
TGG LGH 25B	53178	24	28	1	
TGG LGH 29B	53180	28	31	1	

## APPROVALS



## RELATED PRODUCTS

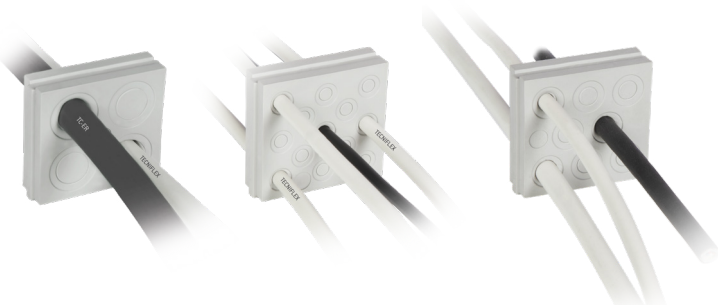
TPD Q p. 21  
TPD R 50 p. 24



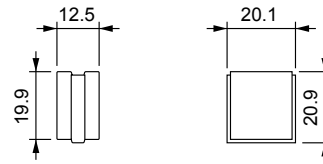
# TGG SM LGH

## DESCRIPTION

TGG SM LGH multiple blind pierceable grommets allow cables without connector to be routed inside TPD series.



## DIMENSIONS



## FEATURES

Material: TPE

Temperature: -40°C +110°C (static)

Model	Part Number	Max. No. of Cables	No. of Cables - Min/Max Cable Ø [mm]	Packaging
TGG SM LGH 4	53219	4	4 - 11 / 15	
TGG SM LGH 8	53221	8	8 - 6 / 10	10
TGG SM LGH 13	53217	13	13 - 4.5 / 6.5	
TGG SM LGH 4B	53220	4	4 - 11 / 15	
TGG SM LGH 8B	53222	8	8 - 6 / 10	10
TGG SM LGH 13B	53218	13	13 - 4.5 / 6.5	

## APPROVALS



## RELATED PRODUCTS

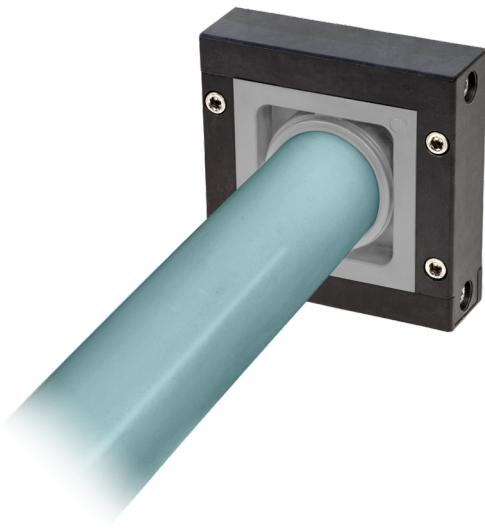
TPD Q p. 21  
TPD R 50 p. 24



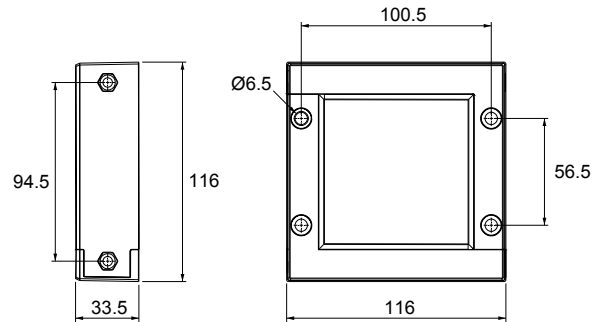
# TPD XL

## DESCRIPTION

TPD XL splittable frames allow big section cables with and without connectors, which ranges from 36 to 65 mm section, to pass through cabinets.



## DIMENSIONS



## FEATURES

Material: PP + GF

Temperature: -40°C +155°C (static)

Gasket: Overmolded

Model	Part Number	Dimensions (L) x (H) x (P) [mm]	Max Opening [mm]	Max. No. of Cables	Packaging
TPD XL	53691	116 x 116 x 33.5	72 x 72	1	1

## APPROVALS



IK10

## RELATED PRODUCTS

TG XL p. 31

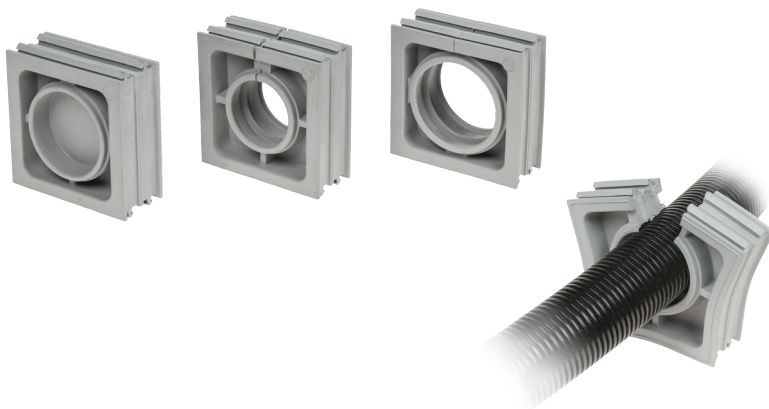




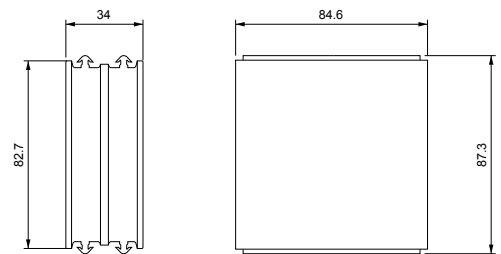
# TG XL

## DESCRIPTION

TG XL grommets allow cables with and without connectors, from 36 to 65 mm section, to be routed inside TPD XL series.



## DIMENSIONS



## FEATURES

Material: TPE

Temperature: -40°C +110°C (static)

Model	Part Number	Min. Cable Ø [mm]	Max. Cable Ø [mm]	Max. No. of Cables	Packaging
TG XL 0	53042	0	0	0	
TG XL 38	53043	36	39	1	
TG XL 42	53044	41	44	1	
TG XL 46	53045	43	48	1	
TG XL 50	53046	47	51	1	1
TG XL 54	53047	52	56	1	
TG XL 58	53048	56	60	1	
TG XL 62	53049	60	65	1	

## APPROVALS



## RELATED PRODUCTS

TPD XL p. 30

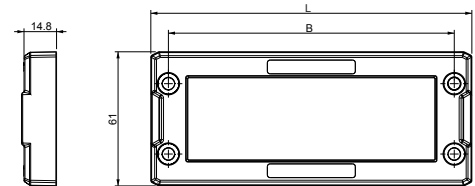


# TPD CVR 24

## DESCRIPTION

TPD CVR 24 are cover plates suitable for protecting unused standard openings.

## DIMENSIONS



## FEATURES

Material: PP + GF

Temperature: -40°C +155°C (static)

Model	Part Number	L	B	Packaging
TPD CVR 24	53610	146	130	10

## APPROVALS





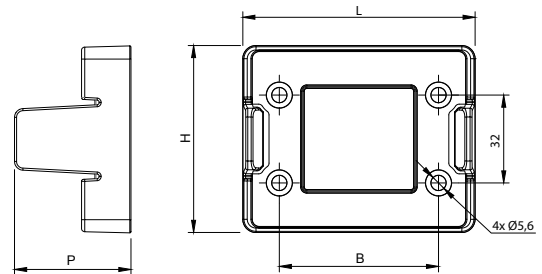
# TPD HQ

## DESCRIPTION

TPD HQ series are the quicker solution to mount a TPD frame without any need for screws.



## DIMENSIONS



## FEATURES

Material: PC + GF

Temperature: -40°C +155°C (static)

Gasket: Included

Model	Part Number	Dimensions (L) x (H) x (P) [mm]	Max Opening [mm]	B	Packaging
TPD H QQ	53631	84.6 x 68.1 x 42.4	40 x 39	58	10
TPD H 10Q	53628	109 x 68.1 x 42.4	86 x 39	83	
TPD H 16Q	53629	132.6 x 69.1 x 42.4	63 x 39	103	
TPD H 24Q	53630	156.6 x 68.1 x 42.4	112 x 39	130	

## APPROVALS



## RELATED PRODUCTS

TPD Q p. 21



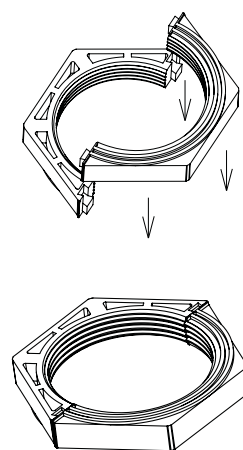
## TD

### DESCRIPTION

TD divisible locknuts are used to allow the routing of connectors, which are dimensionally larger than conventional locknuts, onto TPD R series.



### DIMENSIONS



### FEATURES

Material: PA66

Temperature: -40°C +120°C (static)

Model	Part Number	Thread	Packaging
TD M20	53018	M20	
TD M25	53019	M25	
TD M32	53020	M32	
TD SUB-D9 M32	53024	M32	10
TD M40	53021	M40	
TD M50	53022	M50	
TD M63	53023	M63	

### APPROVALS



### RELATED PRODUCTS

TPD R p. 22  
TPD R 90 p. 25

TPD RH p. 07  
TPD RH50-90 p. 08



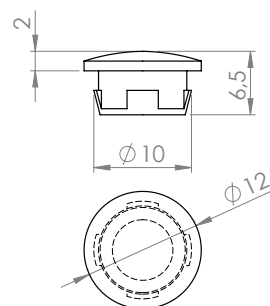
# TCD

## DESCRIPTION

Caps for splittable TPD frames.



## DIMENSIONS



## FEATURES

Material: PE - HD

Model	Part Number	Packaging
TCD	53017	50

## RELATED PRODUCTS

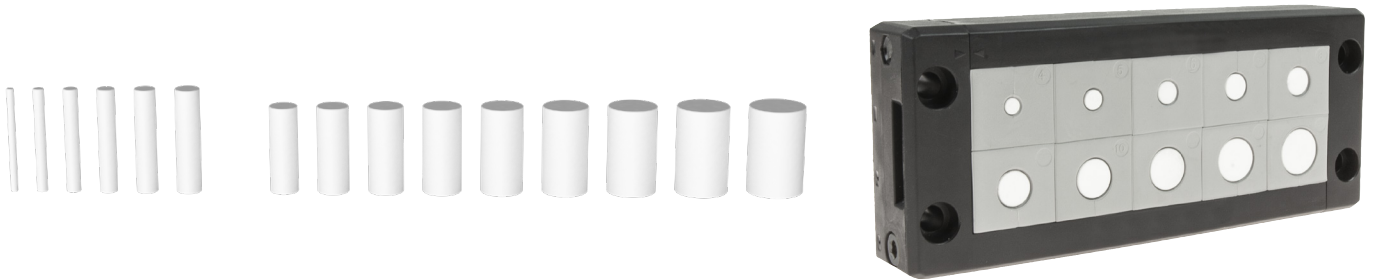
TPD	p. 02	TPD 16M	p. 04
TPD 24M	p. 03	TPD L	p. 06
TPD 24-15	p. 03		



# TTD

## DESCRIPTION

Caps for TPD grommets, from 2 to 22,5 mm section.



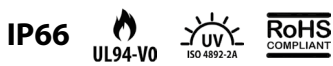
## FEATURES

Material: PA66

Temperature: -40°C +155°C (static)

Model	Part Number	Dimensions (L) x (H) x (P) [mm]	Min. Cable Ø [mm]	Max. Cable Ø [mm]	Max. No. of Cables	Packaging
TTD 2	53978	30 × 2	2	2	1	
TTD 3	53979	30 × 3	3	3	1	
TTD 4	53980	30 × 4	4	4	1	
TTD 5	53981	30 × 5	5	5	1	
TTD 6	53982	30 × 6	6	6	1	
TTD 7	53983	30 × 7	7	7	1	
TTD 8	53984	25 × 8	8	8	1	
TTD 9	53985	25 × 9	9	9	1	20
TTD 10	53971	25 × 10	10	10	1	
TTD 11	53972	25 × 11	11	11	1	
TTD 12	53973	25 × 12	12	12	1	
TTD 13	53974	25 × 13	13	13	1	
TTD 14	53975	25 × 14	14	14	1	
TTD 15	53976	25 × 15	15	15	1	
TTD 16	53977	25 × 16	16	16	1	

## APPROVALS



## RELATED PRODUCTS

TGP	p. 09	TGP SM	p. 13	TGG SM	p. 18
TGP E	p. 10	TGG	p. 15		
TGPS	p. 12	TGG S	p. 17		



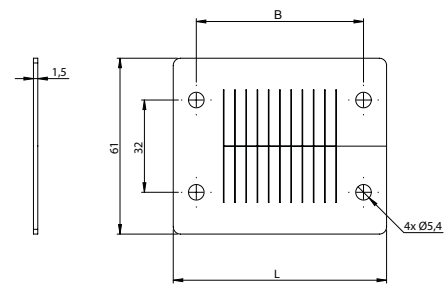
## TGA

### DESCRIPTION

TGA flame retardant gasket can be used with TPD frames to protect enclosures from flames according to EN1363-1 and EN45545-3.



### DIMENSIONS



### FEATURES

Material: Graphite-Based Intumescent

Model	Part Number	L	B	Packaging
TGA Q	53053	74	58	1
TGA 10	53050	99	83	
TGA 16	53051	120	103	
TGA 24	53052	146	130	

### RELATED PRODUCTS

TPD p. 02  
 TPD M pp. 03-04





---

**02**

# **MEMBRANE FRAMES**



# DOUBLE MEMBRANE PLATES WITH INTERNAL FRAME



## TPS D24

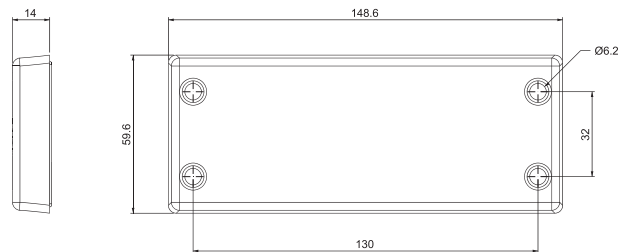
PATENTED

### DESCRIPTION

TPS D24 double membrane plates allow multiple cables without connectors to pass through cabinets. The double membrane guarantees the strain relief and high IP protection. The ATEX EX version can be installed in 2 and 22 areas according to IEC 60079-10.



### DIMENSIONS



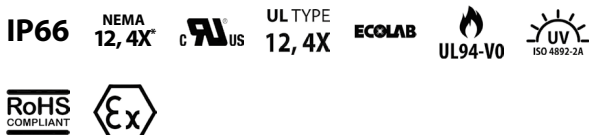
### FEATURES

Material: TPE

Temperature: -40°C +110°C (static)

Model	Part Number	ATEX EX Code	Max Opening [mm]	Min. Cable Ø [mm]	Max. Cable Ø [mm]	Max. No. of Cables	No. of Cables - Min/Max Cable Ø [mm]	Packaging
TPS D24/14	53716	53734	112 × 36	2.8	22	14	10 - 2.8 / 6.5 ; 4 - 14.5 / 22	
TPS D24/15	53718	53736	112 × 36	6.8	12	15	15 - 6.8 / 12	
TPS D24/16	53720	53738	112 × 36	2.8	22	16	8 - 2.8 / 6.5 ; 4 - 4.4 / 9.7 2 - 8.6 / 16.2 ; 2 - 14.5 / 22	
TPS D24/17	53722	53740	112 × 36	2.8	16.2	17	6 - 2.8 / 6.5 ; 6 - 4.6 / 10.2 5 - 8.6 / 16.2	10
TPS D24/25	53724	53742	112 × 36	2.8	12	25	12 - 2.8 / 6.5 ; 7 - 4.4 / 9.7 6 - 6.8 / 12	
TPS D24/32	53726	53744	112 × 36	2.8	12	32	21 - 2.8 / 6.5 ; 8 - 4.6 / 10.2 3 - 6.8 / 12	
TPS D24/42	53728	53746	112 × 36	2.8	6.5	42	42 - 2.8 / 6.5	

### APPROVALS



### RELATED PRODUCTS

TTS p. 47

# SQUARE DOUBLE MEMBRANE PLATES WITH INTERNAL FRAME

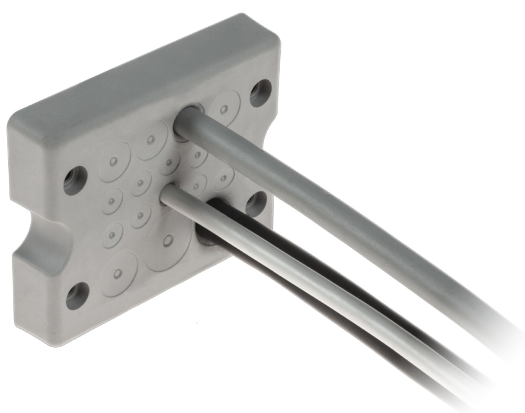


## TPS Q

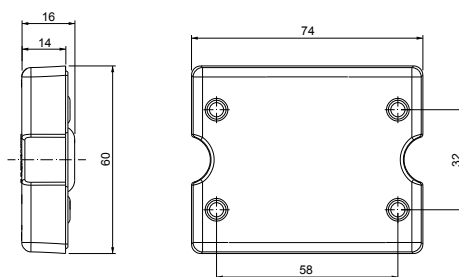
PATENTED

### DESCRIPTION

TPS Q square double membrane plates allow multiple cables without connectors to pass through cabinets. The double membrane guarantees the strain relief and high IP protection. The ATEX EX version can be installed in 2 and 22 areas according to IEC 60079-10.



### DIMENSIONS



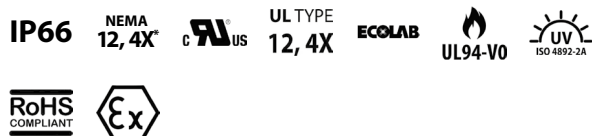
### FEATURES

Material: TPE

Temperature: -40°C +110°C (static)

Model	Part Number	ATEX EX Code	Max Opening [mm]	Min. Cable Ø [mm]	Max. Cable Ø [mm]	Max. No. of Cables	No. of Cables - Min/Max Cable Ø [mm]	Packaging
TPS Q 17	53859	53865	46 × 46	2.8	16.2	17	10 - 2.8 / 6.5 4 - 4.6 / 10.2 2 - 6.8 / 12 1 - 8.6 / 16.2	10

### APPROVALS



### RELATED PRODUCTS

TTS p. 47

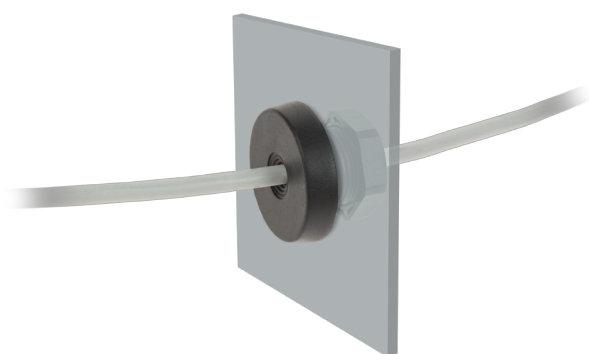


## TPS DRS

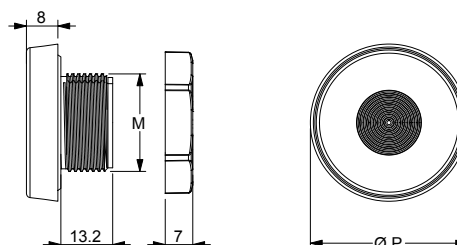
PATENTED

### DESCRIPTION

TPS DRS double membrane round plates allow multiple cables without connectors to pass through cabinets. The double membrane guarantees the strain relief and high IP protection. The ATEX EX version can be installed in 2 and 22 areas according to IEC 60079-10.



### DIMENSIONS



### FEATURES

Material: TPE

Temperature: -40°C +110°C (static)

Model	Part Number	ATEX EX Code	Dimensions (P) [mm]	Max Opening [mm]	Thread	Min. Cable Ø [mm]	Max. Cable Ø [mm]	Max. No. of Cables	No. of Cables - Min/Max Cable Ø [mm]	Packaging
TPS DRS 20	53821	53827	36	20.5	M20	0.1	10.5	1	1 - max. 10.5	
TPS DRS 25	53823	53829	40	25.5	M25	0.1	16	1	1 - max. 16	10
TPS DRS 32	53825	53831	46	32.5	M32	0.1	22	1	1 - max. 22	

### APPROVALS

IP66 NEMA 12, 4X c UL US ECOLAB UL94-V0 ISO 4892-2A RoHS COMPLIANT



### RELATED PRODUCTS

TTS p. 47

# MULTIPLE ENTRY DOUBLE MEMBRANE ROUND PLATES

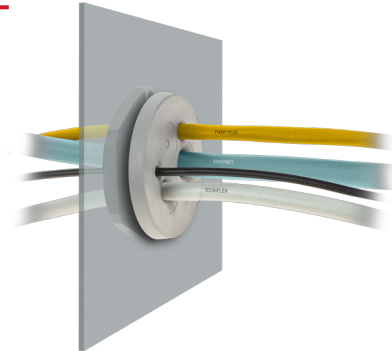


## TPS DRM

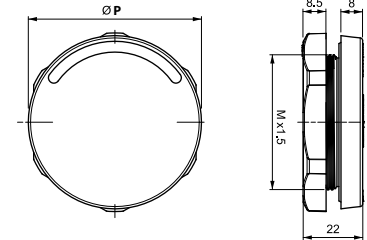
PATENTED

### DESCRIPTION

TPS DRM double membrane round plates allow multiple cables without connectors to pass through cabinets. The double membrane guarantees the strain relief and high IP protection. The ATEX EX version can be installed in 2 and 22 areas according to IEC 60079-10.



### DIMENSIONS



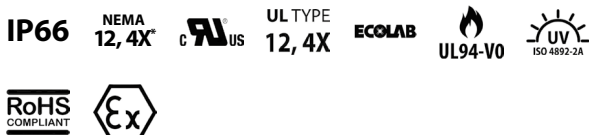
### FEATURES

Material: TPE

Temperature: -40°C +105°C (static)

Model	Part Number	ATEX EX Code	Dimensions (P) [mm]	Max Opening [mm]	Thread	Min. Cable Ø [mm]	Max. Cable Ø [mm]	Max. No. of Cables	No. of Cables - Min/Max Cable Ø [mm]	Packaging
TPS DRM M25/6	53763	53793	41	25.5	M25	2.2	5	6	6 - 2.2 / 5	
TPS DRM M25/4	53761	47831	41	25.5	M25	2.6	12.5	4	3 - 2.6 / 6.5 1 - 5.5 / 12.5	
TPS DRM M32/4	53765	53795	46	32.5	M32	2.6	12.5	4	3 - 2.6 / 6.5 1 - 5.5 / 12.5	
TPS DRM M32/4-2	53766	53796	46	32.5	M32	3.5	8.8	4	4 - 3.5 / 8.8	
TPS DRM M32/7	53769	53799	46	32.5	M32	2.6	6.5	7	7 - 2.6 / 6.5	
TPS DRM M40/8	53773	53801	54	40.5	M40	2.6	10.2	8	4 - 2.6 / 6.5 4 - 4 / 10.2	
TPS DRM M50/10	53775	53803	64	50.5	M50	2.8	22	10	7 - 2.8 / 6.5 2 - 4.6 / 10.2 1 - 14.5 / 22	10
TPS DRM M50/12	53777	53805	64	50.5	M50	2.8	10.2	12	4 - 2.8 / 6.5 8 - 4.6 / 10.2	
TPS DRM M50/19	53779	53807	64	50.5	M50	2.8	6.5	19	19 - 2.8 / 6.5	
TPS DRM M63/13	53783	53811	77	63.5	M63	2.6	16.2	13	4 - 2.8 / 6 4 - 4.6 / 10.2 5 - 9.5 / 16.2	
TPS DRM M63/14	53785	53813	77	63.5	M63	5	10	14	14 - 5 / 10	
TPS DRM M63/35	53787	53815	77	63.5	M63	2.6	5.5	35	35 - 2.6 / 5.5	

### APPROVALS



### RELATED PRODUCTS

TTS p. 47

# DOUBLE MEMBRANE ENTRY PLATES WITH REINFORCED INTERNAL FRAME

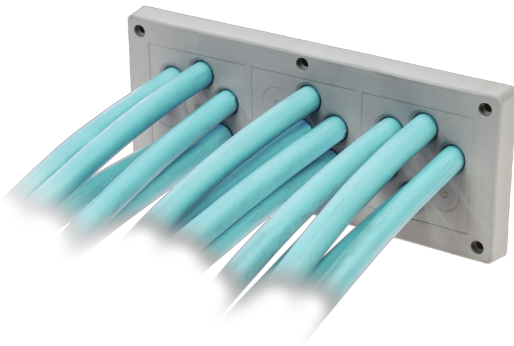


## TPS DXL

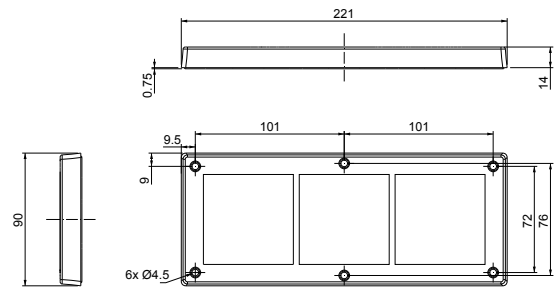
PATENTED

### DESCRIPTION

TPS DXL double membrane plates allow multiple cables without connectors, up to 22 mm section, to pass through cabinets. The double membrane guarantees the strain relief and high IP protection. The ATEX EX version can be installed in 2 and 22 areas according to IEC 60079-10.



### DIMENSIONS



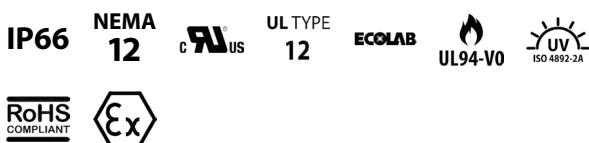
### FEATURES

Material: TPE

Temperature: -40°C +110°C (static)

Model	Part Number	ATEX EX Code	Max Opening [mm]	Min. Cable Ø [mm]	Max. Cable Ø [mm]	Max. No. of Cables	No. of Cables - Min/Max Cable Ø [mm]	Packaging
TPS DXL 72	53837	53843	192 × 62	2.8	22	72	42 - 2.8 / 6.5 21 - 4.6 / 10.2 6 - 8.6 / 16.2 3 - 14.5 / 22	10

### APPROVALS



### RELATED PRODUCTS

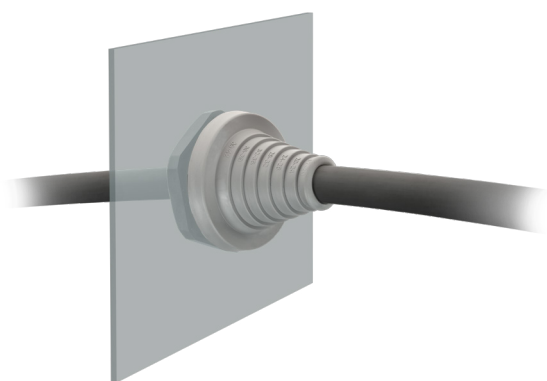
TTS p. 47



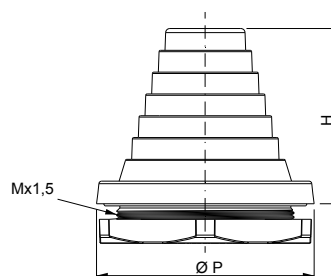
# TPS RP

## DESCRIPTION

TPS RP pyramidal round plates have a reinforced base that increases stability when large cable are used. The ATEX EX version can be installed in 2 and 22 areas according to IEC 60079-10.



## DIMENSIONS



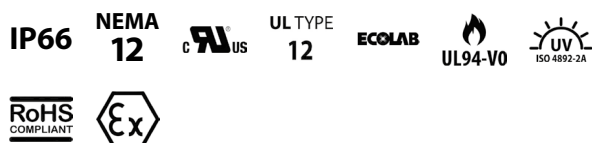
## FEATURES

Material: TPE

Temperature: -40°C +110°C (static)

Model	Part Number	ATEX EX Code	Dimensions (P) [mm]	Max Opening [mm]	Thread	H	Min. Cable Ø [mm]	Max. Cable Ø [mm]	Max. No. of Cables	No. of Cables - Min/Max Cable Ø [mm]	Packaging
TPS RP 25	53895	53908	39	25.5	M25	46.5	2.5	17	1	1 - 2.5 / 17	
TPS RP 32	53897	53910	46	32.5	M32	55.2	5	23	1	1 - 5 / 23	
TPS RP 40	53899	53912	54	40.5	M40	62	8	29	1	1 - 8 / 29	10
TPS RP 50	53901	53914	64	50.5	M50	50	17	42	1	1 - 17 / 42	
TPS RP 63	53903	53916	77	63.5	M63	62	23	55	1	1 - 23 / 55	

## APPROVALS





# TPS 24

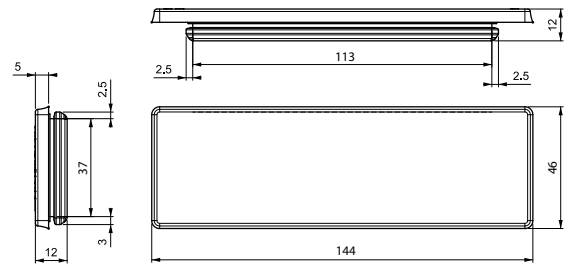
PATENTED

## DESCRIPTION

TPS 24 membrane plates allow multiple cables without connectors to pass through cabinets.



## DIMENSIONS



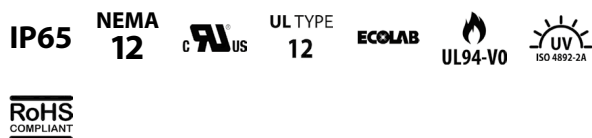
## FEATURES

Material: TPE

Temperature: -40°C +110°C (static)

Model	Part Number	Max Opening [mm]	Min. Cable Ø [mm]	Max. Cable Ø [mm]	Max. No. of Cables	No. of Cables - Min/Max Cable Ø [mm]	Packaging
TPS 24/17	53701	112 × 36 max. +0.5	0.1	12.6	17	5 - max. 10.5 ; 12 - max. 12.6	
TPS 24/18	53703	112 × 36 max. +0.5	0.1	16.1	18	4 - max. 6.5 ; 5 - max. 10.5 5 - max. 12.6 ; 4 - max. 16.1	
TPS 24/20	53705	112 × 36 max. +0.5	0.1	12.1	20	13 - max. 6.5 ; 7 - max. 12.1	
TPS 24/26	53707	112 × 36 max. +0.5	0.1	16.1	26	16 - max. 6.5 ; 4 - max. 12.1 4 - max. 16.1 ; 2 - ASI	10
TPS 24/42	53709	112 × 36 max. +0.5	0.1	7.2	42	1 - max. 4.7 ; 12 - max. 5 17 - max. 6.4 ; 12 - max. 7.2	
TPS 24/48	53711	112 × 36 max. +0.5	0.1	6.5	48	48 - max. 6.5	

## APPROVALS



## RELATED PRODUCTS

TTS p. 47





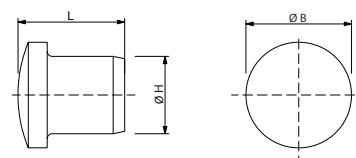
## TTS

### DESCRIPTION

Inserts for membrane entry plates or membrane grommets.  
From 2 to 22.5 mm section.



### DIMENSIONS



### FEATURES

Material: PA6

Temperature: -30°C +100°C (static)

Model	Part Number	L	B	H	Min. Cable Ø [mm]	Max. Cable Ø [mm]	Max. No. of Cables	Packaging
TTS 5	53990	12.5	10	5.5	4.5	8	1	10
TTS 9	53989	16	13.5	9.5	8	12	1	
TTS 12	53986	16.5	16.5	12	12	16	1	
TTS 16	53987	19.5	20.5	16	16	19	1	
TTS 20	53988	21.5	24.5	20	20	22.5	1	

### APPROVALS



### RELATED PRODUCTS

TPS D24 p. 40	TPS DXL p. 44	TGP SM p. 13
TPS Q p. 41	TPS 24 p. 46	TGG S p. 17
TPS DRM p. 43	TGP S p. 12	TGG SM p. 18



---

**03**

# **CABLE FIXINGS**

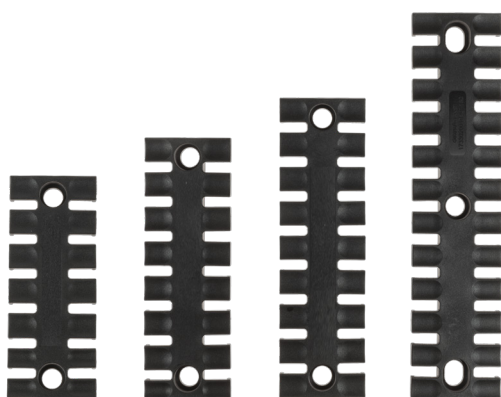




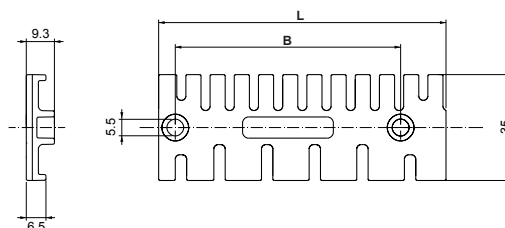
## TFP

### DESCRIPTION

TFP anti-tear cable combs can be used in electrical panels or equipments to keep cables in order. Using the TFP SPACER it is possible to create multi-level cable fasteners.



### DIMENSIONS



### FEATURES

Material: PA

Temperature: -40°C +140°C (static)

Model	Part Number	L	B	Max. No. of Cables	Packaging
TFP 39	53029	38.5	19.5	3	10
TFP 60	53030	59.5	43.5	4	
TFP 70	53031	69.1	43.5	5	
TFP 87	53032	86.5	68	6	
TFP 103	53025	102.5	84	7	
TFP 121	53026	121	102.5	8	
TFP 140	53027	139.5	121	9	
TFP 180	53028	180	157	12	

### APPROVALS



### RELATED PRODUCTS

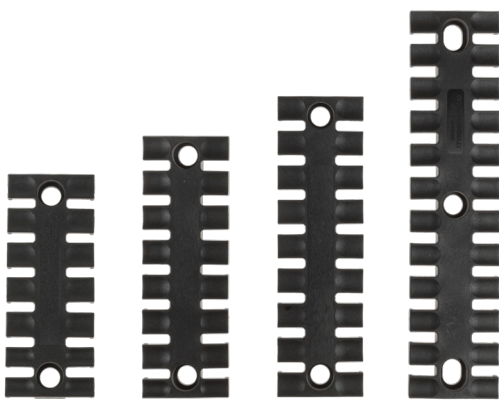
TFP SPACER p. 52



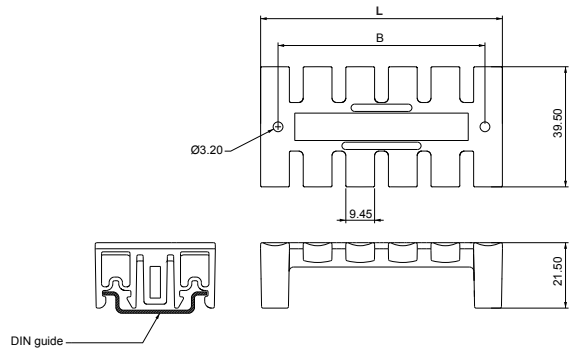
# TFP D35

## DESCRIPTION

TFP D35 anti-tear cable comb with 35 mm DIN rail mount can be used in electrical panels or electrical equipments to keep cables in order.



## DIMENSIONS



## FEATURES

Material: PA

Temperature: -40°C +140°C (static)

Model	Part Number	L	B	Max. No. of Cables	Packaging
TFP D35 39	53035	38.5	28.3	3	10
TFP D35 80	53036	79.5	68	6	
TFP D35 140	53033	139.5	128.1	9	
TFP D35 180	53034	180	157	12	

## APPROVALS

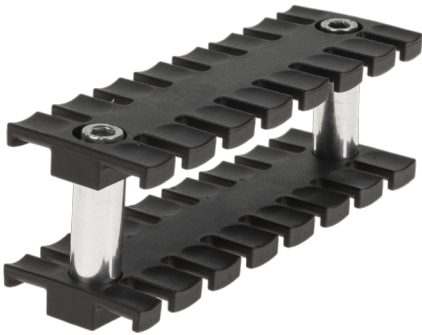




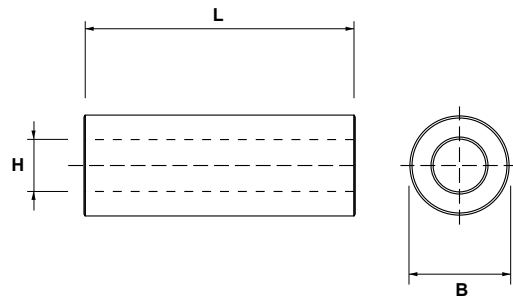
# TFP SPACER

## DESCRIPTION

TFP SPACER can be used with TFP cable combs to create multiple level anti-tear systems.



## DIMENSIONS



## FEATURES

Material: Aluminum

Temperature: -40°C +140°C (static)

Model	Part Number	L	B	H	Max. No. of Cables	Packaging
TFP SPACER 30	53040	30	7	5.2	3	10
TFP SPACER 32	53041	32	12	6.2	4	

## RELATED PRODUCTS

TFP p. 50

---

**04**

# EMC SHIELDING



# SCREW MOUNTING SHIELD CLAMP WITH DOUBLE CABLE TIE

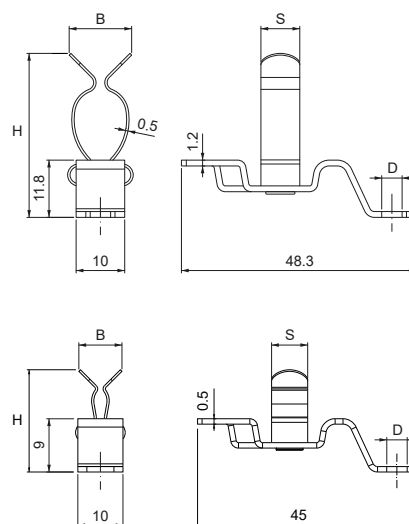


## TMS VFD

### DESCRIPTION

TMS VFD screw mounting shield clamp allows you to easily and effectively ground the shield of cables from 1.5 to 30 mm section with a double cable tie slot.

### DIMENSIONS



### FEATURES

Material: Galvanized Steel

Model	Part Number	Thread	B	H	S	Thickness	Min. Cable Ø [mm]	Max. Cable Ø [mm]	Max. No. of Cables	Packaging
TMS VFD 3-12	53581	M4	16.5	27	8	1.2	3	12	1	50
TMS VFD 9-12	53582	M4	13.5	34	8	1.2	9	12	1	
TMS VFD 10-19	53577	M4	19.5	30.5	8	1.2	10	19	1	
TMS VFD 11-17	53578	M4	12	31	8	0.5	11	17	1	
TMS VFD 18-22	53579	M4	22	43	8	1.2	18	22	1	
TMS VFD 22-30	53580	M4	22.5	50	12	1.2	22	30	1	



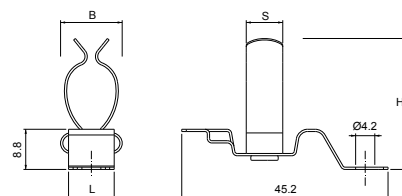
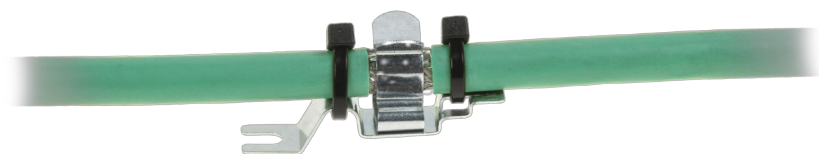


## TMS FFD

### DESCRIPTION

TMS FFD screw mounting shield clamp allows you to easily and effectively ground the shield of cables from 1.5 to 30 mm section with a double cable tie slot.

### DIMENSIONS



### FEATURES

Material: Galvanized Steel

Model	Part Number	L	B	H	S	Min. Cable Ø [mm]	Max. Cable Ø [mm]	Max. No. of Cables	Packaging
TMS FFD 1.5-3	53544	10	11	15.5	8	1.5	3	1	
TMS FFD 3-6	53548	10	11	17.5	8	3	6	1	
TMS FFD 7-9	53549	10	11	21	8	7	9	1	
TMS FFD 9-12	53550	10	12	22.5	8	9	12	1	50
TMS FFD 11-17	53545	10	13.5	29	8	11	17	1	
TMS FFD 18-22	53546	10	22	37	8	18	22	1	
TMS FFD 22-30	53547	10	22.5	46.5	12	22	30	1	

# SCREW MOUNTING SHIELD CLAMP WITH DOUBLE CABLE TIE



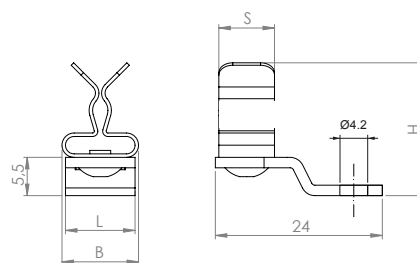
## TMS V

### DESCRIPTION

TMS V screw mounting shield clamp allows you to easily and effectively ground the shield of cables from 1,5 to 12 mm section with a double cable tie slot.



### DIMENSIONS



### FEATURES

Material: Galvanized Steel

Model	Part Number	L	B	H	S	Min. Cable Ø [mm]	Max. Cable Ø [mm]	Max. No. of Cables	Packaging
TMS V 1.5-3	53572	10	11	19	11	1.5	3	1	
TMS V 3-6	53573	10	11	21.5	11	3	6	1	
TMS V 3-9	53574	10	16.5	22	8	3	9	1	50
TMS V 7-9	53575	10	11	24	11	7	9	1	
TMS V 9-12	53576	12	12	27.5	12	9	12	1	



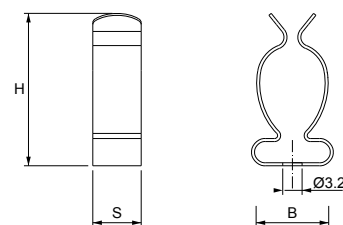
# TMS SP

## DESCRIPTION

TMS SP footless shield clamp allows you to easily and effectively ground the shield of cables from 1.5 to 74 mm section.



## DIMENSIONS



## FEATURES

Material: Galvanized Steel

Model	Part Number	B	H	S	Min. Cable Ø [mm]	Max. Cable Ø [mm]	Max. No. of Cables	Packaging
TMS SP 1.5-3	53559	11	13.5	8	1.5	3	1	50
TMS SP 3-6	53565	11	16	8	3	6	1	
TMS SP 3-9	53567	16.5	20.6	8	3	9	1	
TMS SP 7-9	53570	11	18.5	8	7	9	1	
TMS SP 9-12	53571	12	22	8	9	12	1	
TMS SP 11-17	53561	13.5	27	8	11	17	1	
TMS SP 10-19	53560	19.5	27	8	10	19	1	
TMS SP 18-22	53562	22	36.5	8	18	22	1	
TMS SP 22-30	53563	22	43	12	22	30	1	
TMS SP 30-37	53564	40	55	12	30	37	1	
TMS SP 38-48	53566	40	64	12	38	48	1	
TMS SP 50-60	53568	50	74.5	12	50	60	1	
TMS SP 62-74	53569	62	88	12	62	74	1	

## RELATED PRODUCTS

TSE BD35

p. 58

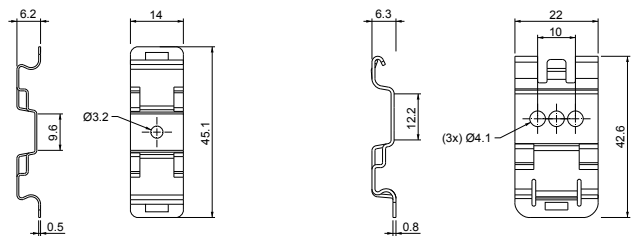
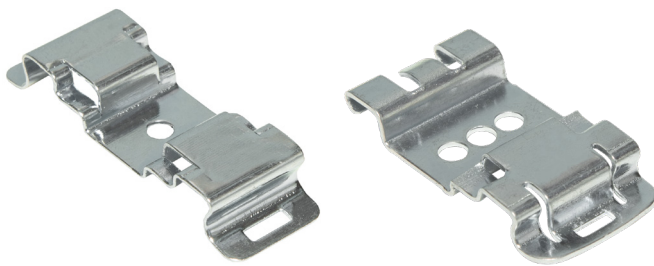


# TSE BD35

## DESCRIPTION

TSE BD35 bases allow quick clamps fixing on a 35 mm DIN rail.

## DIMENSIONS



## FEATURES

Material: Galvanized Steel

Model	Part Number	Packaging
TSE BD35 14	53926	50
TSE BD35 20	53927	
TSE BD35 22	53928	

## RELATED PRODUCTS

TMS SP p. 57



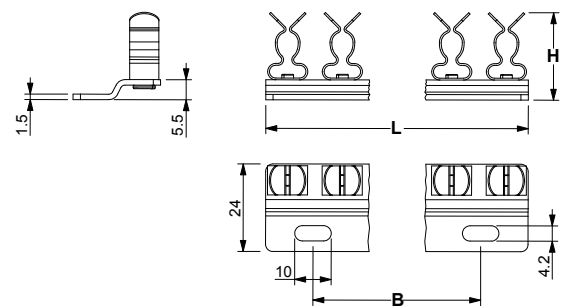
# TMS COM

## DESCRIPTION

TMS COM multiple shield clamps allow you to easily and effectively ground the shield of multiple cables from 1.5 to 12 mm section.



## DIMENSIONS



## FEATURES

Material: Galvanized Steel

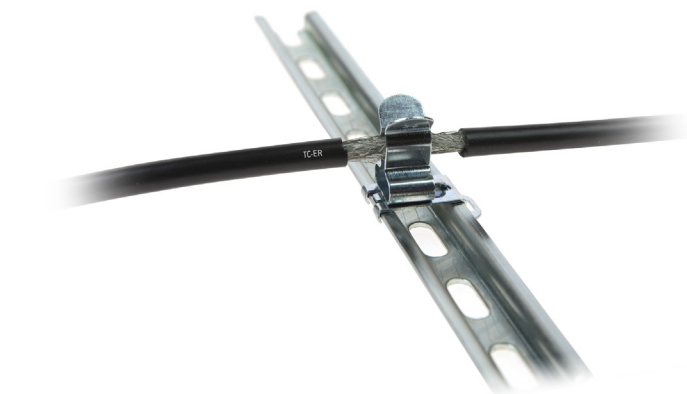
Model	Part Number	L	B	H	Min. Cable Ø [mm]	Max. Cable Ø [mm]	Max. No. of Cables	Packaging
TMS COM 3×1.5-3	53505	30	46	19.1	1.5	3	3	1
TMS COM 3×3-6	53506	30	46	21.6	3	6	3	
TMS COM 3×7-9	53507	30	46	24	7	9	3	
TMS COM 3×9-12	53508	30	46	27.2	9	12	3	
TMS COM 4×1.5-3	53509	30	61	19.1	1.5	3	4	
TMS COM 4×3-6	53510	30	61	21.6	3	6	4	
TMS COM 4×7-9	53511	30	61	24	7	9	4	
TMS COM 4×9-12	53512	30	61	27.2	9	12	4	
TMS COM 6×3-6	53513	62	88	21.6	3	6	6	
TMS COM 6×7-9	53514	62	88	24	7	9	6	
TMS COM 6×9-12	53515	62	88	27.2	9	12	6	
TMS COM 10×3-6	53500	126	150	21.6	3	6	10	
TMS COM 10×7-9	53501	126	150	24	7	9	10	
TMS COM 12×1.5-3	53502	156	182	19.1	1.5	3	12	
TMS COM 12×3-6	53503	156	182	21.6	3	6	12	
TMS COM 12×7-9	53504	156	182	24	7	9	12	



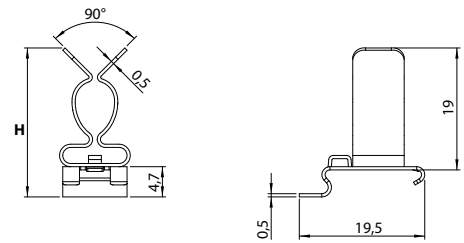
# TMS D15

## DESCRIPTION

TMS D15 shield clamps allow you to easily and effectively ground the shield of cables with diameters from 1.5 to 9 mm on a 15 mm DIN rail.



## DIMENSIONS



## FEATURES

Material: Galvanized Steel

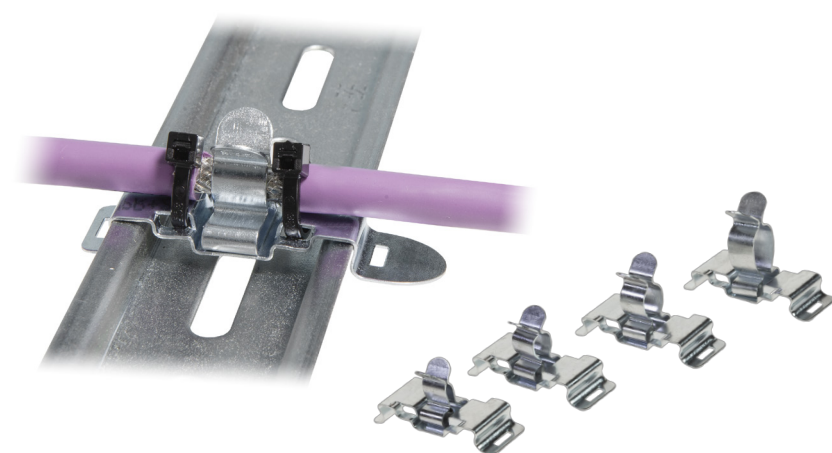
Model	Part Number	H	Min. Cable Ø [mm]	Max. Cable Ø [mm]	Max. No. of Cables	Packaging
TMS D15 1.5-3	53525	18.3	1.5	3	1	50
TMS D15 3-6	53526	21	3	6	1	
TMS D15 7-9	53527	23.2	7	9	1	



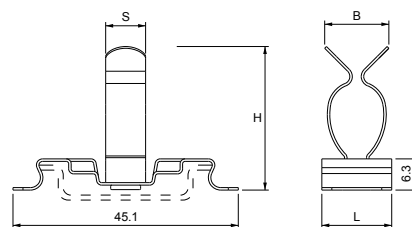
## TMS D35FD

### DESCRIPTION

TMS D35FD shield clamps allow you to easily and effectively ground the shield of cables from 1.5 to 22 mm section with a double cable tie slot on a 35 mm DIN rail.



### DIMENSIONS



### FEATURES

Material: Galvanized Steel

Model	Part Number	L	B	H	S	Min. Cable Ø [mm]	Max. Cable Ø [mm]	Max. No. of Cables	Packaging
TMS D35FD 1.5-3	53533	14	11	15	8	1.5	3	1	50
TMS D35FD 3-6	53537	14	11	17.5	8	3	6	1	
TMS D35FD 3-9	53538	14	16.5	22	8	3	9	1	
TMS D35FD 7-9	53539	14	11	20	8	7	9	1	
TMS D35FD 9-12	53540	14	12	23	8	9	12	1	
TMS D35FD 10-19	53534	14	19.5	28.5	8	10	19	1	
TMS D35FD 11-17	53535	14	13.5	29	8	11	17	1	
TMS D35FD 18-22	53536	14	22	38	8	18	22	1	

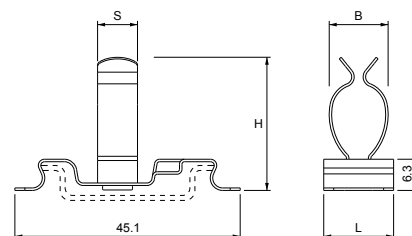
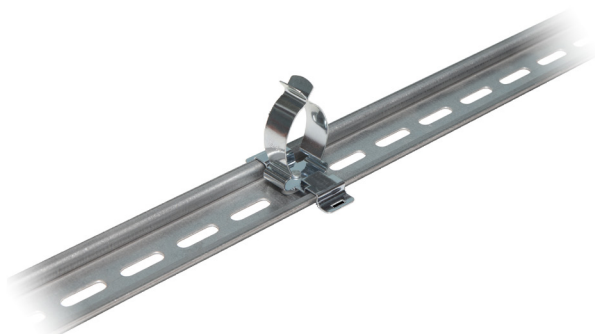


## TMS D35F

### DESCRIPTION

TMS D35F shield clamps allow you to easily and effectively ground the shield of cables from 22 to 74 mm section with a single cable tie slot on a 35 mm DIN rail.

### DIMENSIONS



### FEATURES

Material: Galvanized Steel

Model	Part Number	L	B	H	S	Min. Cable Ø [mm]	Max. Cable Ø [mm]	Max. No. of Cables	Packaging
TMS D35F 22-30	53528	22	22.5	45	12	22	30	1	10
TMS D35F 30-37	53529	22	31	58	12	30	37	1	
TMS D35F 38-48	53530	22	40	68.5	12	38	48	1	
TMS D35F 50-60	53531	22	50	75	12	50	60	1	
TMS D35F 62-74	53532	22	62	89	12	62	74	1	



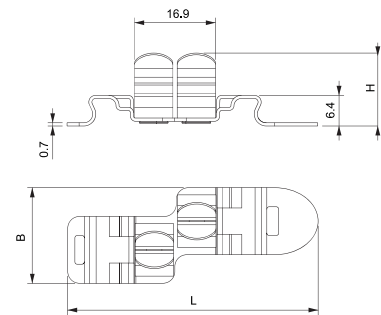
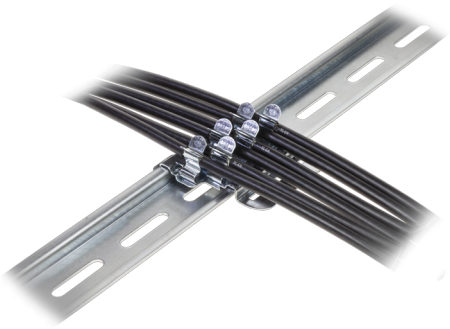


# TMS D35MD

## DESCRIPTION

TMS D35MD shield clamps allow you to easily and effectively ground the shield of cables from 1.5 to 6 mm section on a 35 mm DIN rail.

## DIMENSIONS



## FEATURES

Material: Galvanized Steel

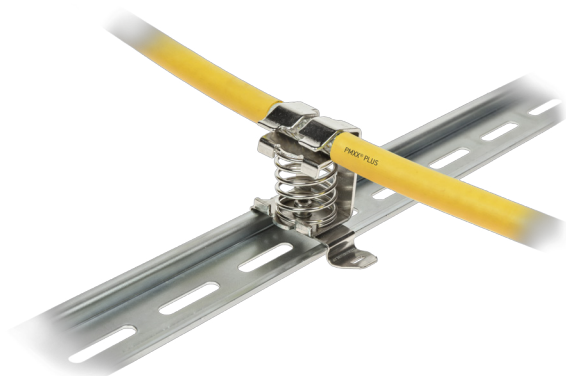
Model	Part Number	L	B	H	Min. Cable Ø [mm]	Max. Cable Ø [mm]	Max. No. of Cables	Packaging
TMS D35MD 1.5-3	53541	52.4	20	15.5	1.5	3	2	50
TMS D35MD 1.5-6	53542	52.4	20	18	1.5	6	2	
TMS D35MD 3-6	53543	52.4	20	18	3	6	2	



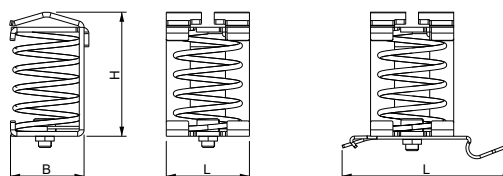
# TMS MORD

## DESCRIPTION

TMS MORD shield clamps allow you to easily and effectively ground the shield of cables on a 15 or 35 mm DIN rail.



## DIMENSIONS



## FEATURES

Material: Electroplated Nickel Steel

Model	Part Number	L	B	H	Min. Cable Ø [mm]	Max. Cable Ø [mm]	Max. No. of Cables	Packaging
TMS MORD15 10-20	53551	26	25	40	10	20	1	10
TMS MORD15 15-32	53552	32	36	64	15	32	1	
TMS MORD15 4-13.5	53554	18	15	30	4	13.5	1	
TMS MORD35 10-20	53555	50.5	25	40	10	20	1	10
TMS MORD35 15-32	53556	50.5	34.5	64	15	32	1	
TMS MORD35 3-8	53557	50	14.5	26	3	8	1	
TMS MORD35 4-13.5	53558	50.5	20.5	30	4	13.5	1	

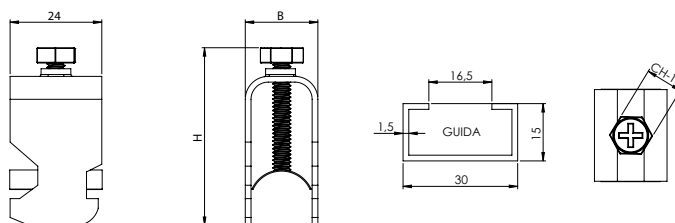
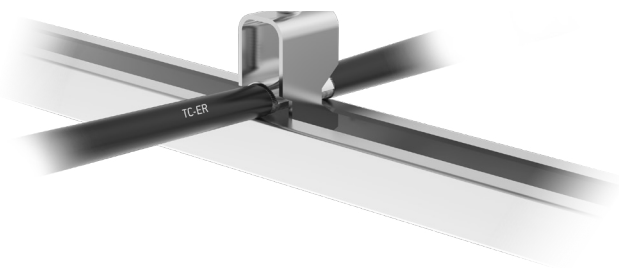


# TMS CV

## DESCRIPTION

TMS CV c-bar mounting shield clamps allow you to easily and effectively ground the shield of cables from 6 to 42 mm section.

## DIMENSIONS



## FEATURES

Material: Galvanized Steel

Model	Part Number	B	H	Min. Cable Ø [mm]	Max. Cable Ø [mm]	Max. No. of Cables	Packaging
TMS CV 6-12	53524	21	70	6	12	1	10
TMS CV 12-18	53519	23	70	12	18	1	
TMS CV 18-22	53520	27	70	18	22	1	
TMS CV 22-30	53521	39	85	22	30	1	
TMS CV 30-38	53522	45	90	30	38	1	
TMS CV 38-42	53523	47	95	38	42	1	

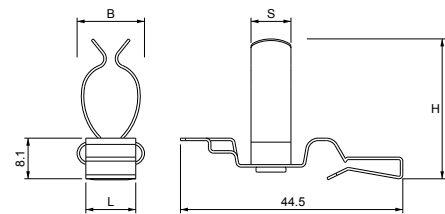
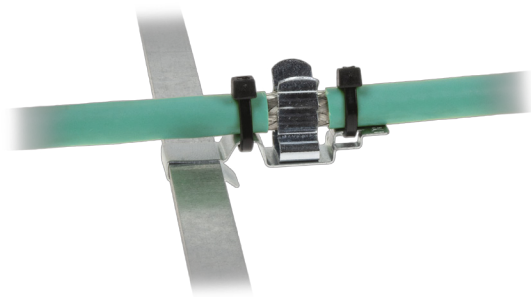


# TMS BFD

## DESCRIPTION

TMS BFD 10×3 bar mounting shield clamps allow you to easily and effectively ground the shield of cables from 1.5 to 30 mm section.

## DIMENSIONS



## FEATURES

Material: Galvanized Steel

Model	Part Number	L	B	H	S	Min. Cable Ø [mm]	Max. Cable Ø [mm]	Max. No. of Cables	Packaging
TMS BFD 1.5-3	53486	10	11	15	8	1.5	3	1	50
TMS BFD 3-6	53491	10	11	17	8	3	6	1	
TMS BFD 3-9	53492	10	16.5	23.5	8	3	9	1	
TMS BFD 7-9	53493	10	11	20	8	7	9	1	
TMS BFD 9-12	53494	10	12	22	8	9	12	1	
TMS BFD 10-19	53487	10	19.5	30	8	10	19	1	
TMS BFD 11-17	53488	10	13.5	28	8	11	17	1	
TMS BFD 18-22	53489	10	22	37	8	18	22	1	
TMS BFD 22-30	53490	10	22.5	46.5	12	22	30	1	



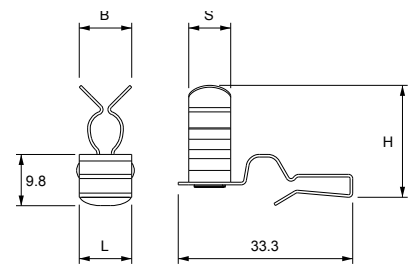
## TMS BF

### DESCRIPTION

TMS BF 10×3 bar mounting shield clamps allow you to easily and effectively ground the shield of cables from 1.5 to 30 mm section.



### DIMENSIONS



### FEATURES

Material: Galvanized Steel

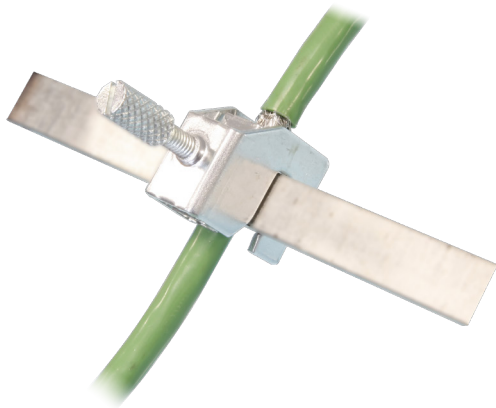
Model	Part Number	L	B	H	S	Min. Cable Ø [mm]	Max. Cable Ø [mm]	Max. No. of Cables	Packaging
TMS BF 1.5-3	53479	10	11	16.5	8	1.5	3	1	50
TMS BF 3-6	53483	10	11	19	8	3	6	1	
TMS BF 7-9	53484	10	11	21.5	8	7	9	1	
TMS BF 9-12	53485	10	12	24.5	8	9	12	1	
TMS BF 11-17	53480	10	13.5	30	8	11	17	1	
TMS BF 18-22	53481	10	22	39.5	8	18	22	1	
TMS BF 22-30	53482	10	22.5	46.5	12	22	30	1	



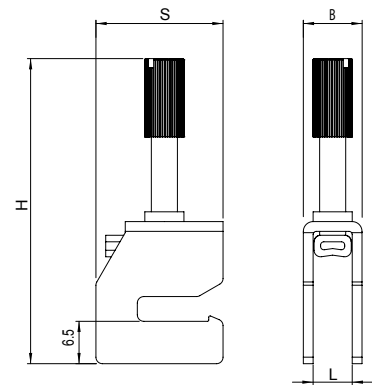
# TMS BV

## DESCRIPTION

TMS BV 10×3 bar mounting shield clamps allow you to easily and effectively ground the shield of cables from 1.5 to 35 mm section.



## DIMENSIONS



## FEATURES

Material: Galvanized Steel

Model	Part Number	L	B	H	S	Min. Cable Ø [mm]	Max. Cable Ø [mm]	Max. No. of Cables	Packaging
TMS BV 2-5	53495	6.5	9.4	47.5	19.5	2	5	1	
TMS BV 3-14	53497	14	17.3	60.6	19.5	3	14	1	
TMS BV 3-20	53498	21	24	75	19.5	3	20	1	10
TMS BV 3-8	53499	9	12.4	49.5	19.5	3	8	1	
TMS BV 28-35	53496	36	40	106.5	20	20	35	1	

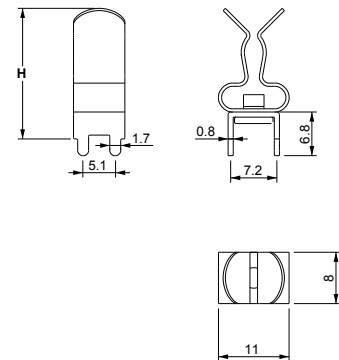


# TMS CS

## DESCRIPTION

PCB mounting shield clips TMS CS allow you to easily and effectively ground the shield of cables with diameters from 1.5 to 9 mm section.

## DIMENSIONS



## FEATURES

Material: Tinned Brass (Base) - Galvanized Steel (Clip)

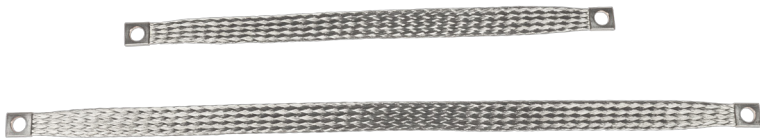
Model	Part Number	H	Min. Cable Ø [mm]	Max. Cable Ø [mm]	Max. No. of Cables	Packaging
TMS CS 1.5-3	53516	18	1.5	3	1	50
TMS CS 3-6	53517	20.5	3	6	1	
TMS CS 7-9	53518	23	7	9	1	



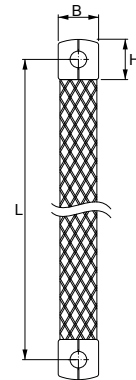
## TSE T

### DESCRIPTION

TSE T flexible earthing straps are made of tinned copper braided cables. Available in various sections and lengths, they facilitate the earthing of enclosures and devices.



### DIMENSIONS



### FEATURES

Material: Tinned Copper >99.95%

Model	Part Number	L	B	H	Pack-aging
TSE T 10/100/M6	53929	100	17	23	
TSE T 10/100/M8	53930	100	17	23	
TSE T 10/150/M8	53931	150	17	23	
TSE T 10/200/M6	53932	200	17	23	
TSE T 10/200/M8	53933	200	17	23	
TSE T 10/250/M6	53934	250	17	23	
TSE T 10/300/M6	53935	300	17	23	
TSE T 10/300/M8	53936	300	17	23	
TSE T 10/400/M6	53937	400	17	23	
TSE T 10/400/M8	53938	400	17	23	
TSE T 10/500/M6	53939	500	17	23	1
TSE T 16/100/M6	53940	100	17	23	
TSE T 16/100/M8	53941	100	17	23	
TSE T 16/150/M6	53942	150	17	23	
TSE T 16/150/M8	53943	150	17	23	
TSE T 16/200/M6	53944	200	17	23	
TSE T 16/200/M8	53945	150	17	23	
TSE T 16/250/M8	53946	250	17	23	
TSE T 16/300/M6	53947	300	17	23	
TSE T 16/300/M8	53948	300	17	23	
TSE T 16/350/M8	53949	350	17	23	

Model	Part Number	L	B	H	Pack-aging
TSE T 16/400/M8	53950	400	17	23	
TSE T 16/500/M8	53951	500	17	23	
TSE T 16/600/M8	53952	600	17	23	
TSE T 25/100/M10	53953	100	23	23	
TSE T 25/150/M10	53954	150	23	23	
TSE T 25/200/M10	53955	200	23	23	
TSE T 25/200/M8	53956	200	23	23	
TSE T 25/250/M8	53957	250	23	23	
TSE T 25/300/M10	53958	300	23	23	
TSE T 25/300/M8	53959	300	23	23	
TSE T 25/350/M10	53960	350	23	23	1
TSE T 25/400/M8	53961	400	23	23	
TSE T 25/500/M8	53962	500	23	23	
TSE T 25/600/M8	53963	600	23	23	
TSE T 6/100/M6	53964	100	11	13	
TSE T 6/150/M6	53965	150	11	13	
TSE T 6/200/M6	53966	200	11	13	
TSE T 6/250/M6	53967	250	11	13	
TSE T 6/300/M6	53968	300	11	13	
TSE T 6/400/M6	53969	400	11	13	
TSE T 6/500/M6	53970	500	11	13	

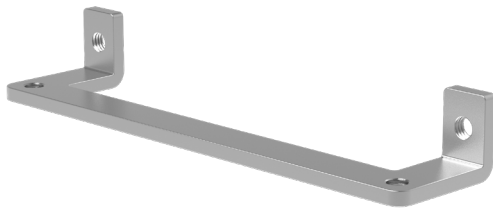




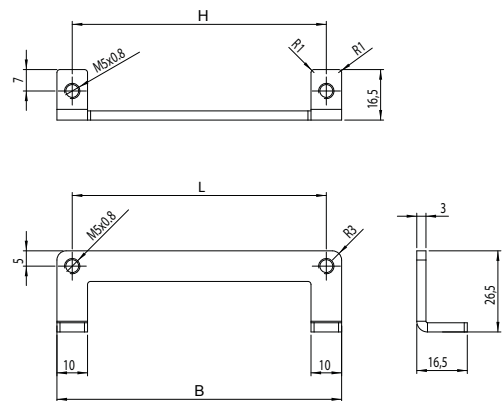
# TPD ST

## DESCRIPTION

TPD ST flexible earthing straps are made of tinned copper braided cables. Available in various sections and lengths, they facilitate the earthing of enclosures and devices.



## DIMENSIONS



## FEATURES

Material: Stainless Steel SS304

Model	Part Number	L	B	H	Packaging
TPD ST Q	53623	58	68	58	1
TPD ST 10	53620	83	93	83	
TPD ST 16	53621	103	113	103	
TPD ST 24	53622	130	140	130	

## RELATED PRODUCTS

TPD p. 02  
TPD M pp. 03-04

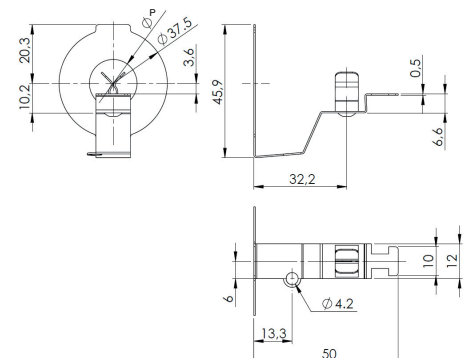
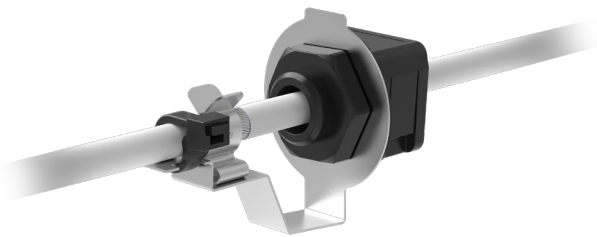


# TPD RST

## DESCRIPTION

TPD RST flexible earthing straps are made of tinned copper braided cables. Available in various sections and lengths, they facilitate the earthing of enclosures and devices.

## DIMENSIONS



## FEATURES

Material: Stainless Steel SS304

Model	Part Number	Dimensions (P) [mm]	Packaging
TPD RST16 1.5-3	53683	16.5	10
TPD RST16 3-6	53684	16.5	
TPD RST20 1.5-3	53685	20.5	
TPD RST20 3-6	53686	20.5	
TPD RST25 1.5-3	53687	25.5	
TPD RST25 3-6	53688	25.5	
TPD RST32 1.5-3	53689	32.5	
TPD RST32 3-6	53690	32.5	

## RELATED PRODUCTS

TPD R p. 22

---

# CODE INDEX



Model	Part Number	Page
TPS DRM M25/4 EX	47831	43
TCD	53017	35
TD M20	53018	34
TD M25	53019	34
TD M32	53020	34
TD M40	53021	34
TD M50	53022	34
TD M63	53023	34
TD SUB-D9 M32	53024	34
TFP 103	53025	50
TFP 121	53026	50
TFP 140	53027	50
TFP 180	53028	50
TFP 39	53029	50
TFP 60	53030	50
TFP 70	53031	50
TFP 87	53032	50
TFP D35 140	53033	51
TFP D35 180	53034	51
TFP D35 39	53035	51
TFP D35 80	53036	51
TFP SPACER 30	53040	52
TFP SPACER 32	53041	52
TG XL 0	53042	31
TG XL 38	53043	31
TG XL 42	53044	31
TG XL 46	53045	31
TG XL 50	53046	31
TG XL 54	53047	31
TG XL 58	53048	31
TG XL 62	53049	31
TGA 10	53050	37
TGA 16	53051	37
TGA 24	53052	37
TGA Q	53053	37

Model	Part Number	Page
TGG 0	53054	15
TGG 0B	53055	15
TGG 17	53056	15
TGG 17B	53057	15
TGG 18	53058	15
TGG 18B	53059	15
TGG 19	53060	15
TGG 19B	53061	15
TGG 20	53062	15
TGG 20B	53063	15
TGG 21	53064	15
TGG 21B	53065	15
TGG 22	53066	15
TGG 22B	53067	15
TGG 23	53068	15
TGG 23B	53069	15
TGG 24	53070	15
TGG 24B	53071	15
TGG 25	53072	15
TGG 25B	53073	15
TGG 26	53074	15
TGG 26B	53075	15
TGG 27	53076	15
TGG 27B	53077	15
TGG 28	53078	15
TGG 28B	53079	15
TGG 29	53080	15
TGG 29B	53081	15
TGG 30	53082	15
TGG 30B	53083	15
TGG 31	53084	15
TGG 31B	53085	15
TGG 32	53086	15
TGG 32B	53087	15
TGG 33	53088	15

Model	Part Number	Page
TGG 33B	53089	15
TGG 34	53090	15
TGG 34B	53091	15
TGG A	53092	20
TGG AB	53093	20
TGG 0 EX	53113	15
TGG 0B EX	53114	15
TGG 17 EX	53115	15
TGG 17B EX	53116	15
TGG 18 EX	53117	15
TGG 18B EX	53118	15
TGG 19 EX	53119	15
TGG 19B EX	53120	15
TGG 20 EX	53121	15
TGG 20B EX	53122	15
TGG 21 EX	53123	15
TGG 21B EX	53124	15
TGG 22 EX	53125	15
TGG 22B EX	53126	15
TGG 23 EX	53127	15
TGG 23B EX	53128	15
TGG 24 EX	53129	15
TGG 24B EX	53130	15
TGG 25 EX	53131	15
TGG 25B EX	53132	15
TGG 26 EX	53133	15
TGG 26B EX	53134	15
TGG 27B EX	53135	15
TGG 27 EX	53136	15
TGG 28 EX	53137	15
TGG 28B EX	53138	15
TGG 29 EX	53139	15
TGG 29B EX	53140	15
TGG 30 EX	53141	15
TGG 30B EX	53142	15

Model	Part Number	Page
TGG 31 EX	53143	15
TGG 31B EX	53144	15
TGG 32 EX	53145	15
TGG 32B EX	53146	15
TGG 33 EX	53147	15
TGG 33B EX	53148	15
TGG 34 EX	53149	15
TGG 34B EX	53150	15
TGG J 12	53151	19
TGG J 22	53152	19
TGG J 25	53153	19
TGG J 2xUSB2.0	53154	19
TGG J FP23	53155	19
TGG J FQ20	53156	19
TGG J FQ27	53157	19
TGG J HDMI	53158	19
TGG J RJ45cat.6	53159	19
TGG J USB3.0	53160	19
TGG J USB-C	53162	19
TGG JH HDMI	53165	19
TGG JH RJ45cat.6	53166	19
TGG JH USB3.0	53167	19
TGG JH USB-C	53168	19
TGG LGH 0	53169	28
TGG LGH 0B	53170	28
TGG LGH 13	53171	28
TGG LGH 13B	53172	28
TGG LGH 17	53173	28
TGG LGH 17B	53174	28
TGG LGH 21	53175	28
TGG LGH 21B	53176	28
TGG LGH 25	53177	28
TGG LGH 25B	53178	28
TGG LGH 29	53179	28
TGG LGH 29B	53180	28

Model	Part Number	Page
TGG P	53181	16
TGG PB	53182	16
TGG P EX	53183	16
TGG PB EX	53184	16
TGG S 0	53185	17
TGG S 0B	53186	17
TGG S 1	53187	17
TGG S 1B	53188	17
TGG S 2	53189	17
TGG S 2B	53190	17
TGG S 3	53191	17
TGG S 3B	53192	17
TGG S 3 EX	53193	17
TGG S 0B EX	53194	17
TGG S 3B EX	53195	17
TGG S 0 EX	53196	17
TGG S 1 EX	53197	17
TGG S 1B EX	53198	17
TGG S 2 EX	53199	17
TGG S 2B EX	53200	17
TGG SM 14	53201	18
TGG SM 14B	53202	18
TGG SM 15	53203	18
TGG SM 15B	53204	18
TGG SM 7	53205	18
TGG SM 7B	53206	18
TGG SM 9	53207	18
TGG SM 9B	53208	18
TGG SM 14 EX	53209	18
TGG SM 14B EX	53210	18
TGG SM 15 EX	53211	18
TGG SM 15B EX	53212	18
TGG SM 7 EX	53213	18
TGG SM 7B EX	53214	18
TGG SM 9 EX	53215	18

Model	Part Number	Page
TGG SM 9B EX	53216	18
TGG SM LGH 13	53217	29
TGG SM LGH 13B	53218	29
TGG SM LGH 4	53219	29
TGG SM LGH 4B	53220	29
TGG SM LGH 8	53221	29
TGG SM LGH 8B	53222	29
TGP 0	53223	09
TGP 0B	53224	09
TGP 10	53225	09
TGP 10B	53226	09
TGP 11	53227	09
TGP 11B	53228	09
TGP 12	53229	09
TGP 12B	53230	09
TGP 13	53231	09
TGP 13B	53232	09
TGP 14	53233	09
TGP 14B	53234	09
TGP 15	53235	09
TGP 15B	53236	09
TGP 16	53237	09
TGP 16B	53238	09
TGP 2	53239	09
TGP 2B	53240	09
TGP 2x2	53241	09
TGP 2x2B	53242	09
TGP 2x3	53243	09
TGP 2x3B	53244	09
TGP 2x4	53245	09
TGP 2x4B	53246	09
TGP 2x5	53247	09
TGP 2x5B	53248	09
TGP 2x6	53249	09
TGP 2x6B	53250	09

Model	Part Number	Page
TGP 2×7	53251	09
TGP 2×7B	53252	09
TGP 2×8	53253	09
TGP 2×8B	53254	09
TGP 2×ASI	53255	09
TGP 3	53256	09
TGP 3B	53257	09
TGP 4	53258	09
TGP 4B	53259	09
TGP 4×2	53260	09
TGP 4×2B	53261	09
TGP 4×3	53262	09
TGP 4×3B	53263	09
TGP 4×4	53264	09
TGP 4×4B	53265	09
TGP 4×5	53266	09
TGP 4×5B	53267	09
TGP 4×6	53268	09
TGP 4×6B	53269	09
TGP 5	53270	09
TGP 5B	53271	09
TGP 6	53272	09
TGP 6B	53273	09
TGP 7	53274	09
TGP 7B	53275	09
TGP 8	53276	09
TGP 8B	53277	09
TGP 9	53278	09
TGP 9B	53279	09
TGP ASI	53280	09
TGP E 12-15	53281	10
TGP E 12-15B	53282	10
TGP E 3-6	53283	10
TGP E 3-6B	53284	10
TGP E 6-9	53285	10

Model	Part Number	Page
TGP E 6-9B	53286	10
TGP E 9-12	53287	10
TGP E 9-12B	53288	10
TGP 0 EX	53321	09
TGP 0B EX	53322	09
TGP 10 EX	53323	09
TGP 10B EX	53324	09
TGP 11 EX	53325	09
TGP 11B EX	53326	09
TGP 12 EX	53327	09
TGP 12B EX	53328	09
TGP 13 EX	53329	09
TGP 13B EX	53330	09
TGP 14 EX	53331	09
TGP 14B EX	53332	09
TGP 15 EX	53333	09
TGP 15B EX	53334	09
TGP 16 EX	53335	09
TGP 16B EX	53336	09
TGP 2 EX	53337	09
TGP 2B EX	53338	09
TGP 2×2 EX	53339	09
TGP 2×2B EX	53340	09
TGP 2×3 EX	53341	09
TGP 2×3B EX	53342	09
TGP 2×4 EX	53343	09
TGP 2×4B EX	53344	09
TGP 2×5 EX	53345	09
TGP 2×5B EX	53346	09
TGP 2×6 EX	53347	09
TGP 2×6B EX	53348	09
TGP 2×7 EX	53349	09
TGP 2×7B EX	53350	09
TGP 2×8 EX	53351	09
TGP 2×8B EX	53352	09

Model	Part Number	Page
TGP 3 EX	53353	09
TGP 3B EX	53354	09
TGP 4 EX	53355	09
TGP 4B EX	53356	09
TGP 4×2 EX	53357	09
TGP 4×2B EX	53358	09
TGP 4×3 EX	53359	09
TGP 4×3B EX	53360	09
TGP 4×4 EX	53361	09
TGP 4×4B EX	53362	09
TGP 4×5 EX	53363	09
TGP 4×5B EX	53364	09
TGP 4×6 EX	53365	09
TGP 4×6B EX	53366	09
TGP 5 EX	53367	09
TGP 5B EX	53368	09
TGP 6 EX	53369	09
TGP 6B EX	53370	09
TGP 7 EX	53371	09
TGP 7B EX	53372	09
TGP 8 EX	53373	09
TGP 8B EX	53374	09
TGP 9 EX	53375	09
TGP 9B EX	53376	09
TGP F 1/4	53377	14
TGP F 1/8	53378	14
TGP F 16	53379	14
TGP FV	53380	14
TGP F 12	53381	14
TGP F 8	53382	14
TGP LGH 0	53383	26
TGP LGH 0B	53384	26
TGP LGH 10	53385	26
TGP LGH 10B	53386	26
TGP LGH 11	53387	26

Model	Part Number	Page
TGP LGH 11B	53388	26
TGP LGH 12	53389	26
TGP LGH 12B	53390	26
TGP LGH 13	53391	26
TGP LGH 13B	53392	26
TGP LGH 14	53393	26
TGP LGH 14B	53394	26
TGP LGH 2	53395	26
TGP LGH 2B	53396	26
TGP LGH 2×2	53397	26
TGP LGH 2×2B	53398	26
TGP LGH 2×3	53399	26
TGP LGH 2×3B	53400	26
TGP LGH 2×4	53401	26
TGP LGH 2×4B	53402	26
TGP LGH 2×5	53403	26
TGP LGH 2×5B	53404	26
TGP LGH 2×6	53405	26
TGP LGH 2×6B	53406	26
TGP LGH 2×7	53407	26
TGP LGH 2×7B	53408	26
TGP LGH 3	53409	26
TGP LGH 3B	53410	26
TGP LGH 4	53411	26
TGP LGH 4B	53412	26
TGP LGH 4×2	53413	26
TGP LGH 4×2B	53414	26
TGP LGH 4×3	53415	26
TGP LGH 4×3B	53416	26
TGP LGH 4×4	53417	26
TGP LGH 4×4.5	53418	26
TGP LGH 4×4.5B	53419	26
TGP LGH 4×4B	53420	26
TGP LGH 4×5	53421	26
TGP LGH 4×5B	53422	26

Model	Part Number	Page
TGP LGH 4×6	53423	26
TGP LGH 4×6B	53424	26
TGP LGH 5	53425	26
TGP LGH 5B	53426	26
TGP LGH 6	53427	26
TGP LGH 6B	53428	26
TGP LGH 7	53429	26
TGP LGH 7B	53430	26
TGP LGH 8	53431	26
TGP LGH 8B	53432	26
TGP LGH 9	53433	26
TGP LGH 9B	53434	26
TGP P	53435	11
TGP PB	53436	11
TGP S 0	53437	12
TGP S 0B	53438	12
TGP S 1	53439	12
TGP S 1B	53440	12
TGP S 2	53441	12
TGP S 2B	53442	12
TGP S 3	53443	12
TGP S 3B	53444	12
TGP S 4	53445	12
TGP S 4B	53446	12
TGP S 5	53447	12
TGP S 5B	53448	12
TGP S 0 EX	53449	12
TGP S 0B EX	53450	12
TGP S 1 EX	53451	12
TGP S 1B EX	53452	12
TGP S 2 EX	53453	12
TGP S 2B EX	53454	12
TGP S 3 EX	53455	12
TGP S 3B EX	53456	12
TGP S 4 EX	53457	12

Model	Part Number	Page
TGP S 4B EX	53458	12
TGP S 5 EX	53459	12
TGP S 5B EX	53460	12
TGP S LGH 0	53461	27
TGP S LGH 0B	53462	27
TGP S LGH 1	53463	27
TGP S LGH 1B	53464	27
TGP S LGH 2	53465	27
TGP S LGH 2B	53466	27
TGP S LGH 3	53467	27
TGP S LGH 3B	53468	27
TGP S LGH 4	53469	27
TGP S LGH 4B	53470	27
TGP SM 4	53471	13
TGP SM 4-2	53472	13
TGP SM 4-2B	53473	13
TGP SM 4B	53474	13
TGP SM 4 EX	53475	13
TGP SM 4-2 EX	53476	13
TGP SM 4-2B EX	53477	13
TGP SM 4B EX	53478	13
TMS BF 1.5-3	53479	67
TMS BF 11-17	53480	67
TMS BF 18-22	53481	67
TMS BF 22-30	53482	67
TMS BF 3-6	53483	67
TMS BF 7-9	53484	67
TMS BF 9-12	53485	67
TMS BFD 1.5-3	53486	66
TMS BFD 10-19	53487	66
TMS BFD 11-17	53488	66
TMS BFD 18-22	53489	66
TMS BFD 22-30	53490	66
TMS BFD 3-6	53491	66
TMS BFD 3-9	53492	66

Model	Part Number	Page
TMS BFD 7-9	53493	66
TMS BFD 9-12	53494	66
TMS BV 2-5	53495	68
TMS BV 28-35	53496	68
TMS BV 3-14	53497	68
TMS BV 3-20	53498	68
TMS BV 3-8	53499	68
TMS COM 10×3-6	53500	59
TMS COM 10×7-9	53501	59
TMS COM 12×1.5-3	53502	59
TMS COM 12×3-6	53503	59
TMS COM 12×7-9	53504	59
TMS COM 3×1.5-3	53505	59
TMS COM 3×3-6	53506	59
TMS COM 3×7-9	53507	59
TMS COM 3×9-12	53508	59
TMS COM 4×1.5-3	53509	59
TMS COM 4×3-6	53510	59
TMS COM 4×7-9	53511	59
TMS COM 4×9-12	53512	59
TMS COM 6×3-6	53513	59
TMS COM 6×7-9	53514	59
TMS COM 6×9-12	53515	59
TMS CS 1.5-3	53516	69
TMS CS 3-6	53517	69
TMS CS 7-9	53518	69
TMS CV 12-18	53519	65
TMS CV 18-22	53520	65
TMS CV 22-30	53521	65
TMS CV 30-38	53522	65
TMS CV 38-42	53523	65
TMS CV 6-12	53524	65
TMS D15 1.5-3	53525	60
TMS D15 3-6	53526	60
TMS D15 7-9	53527	60

Model	Part Number	Page
TMS D35F 22-30	53528	62
TMS D35F 30-37	53529	62
TMS D35F 38-48	53530	62
TMS D35F 50-60	53531	62
TMS D35F 62-74	53532	62
TMS D35FD 1.5-3	53533	61
TMS D35FD 10-19	53534	61
TMS D35FD 11-17	53535	61
TMS D35FD 18-22	53536	61
TMS D35FD 3-6	53537	61
TMS D35FD 3-9	53538	61
TMS D35FD 7-9	53539	61
TMS D35FD 9-12	53540	61
TMS D35MD 1.5-3	53541	63
TMS D35MD 1.5-6	53542	63
TMS D35MD 3-6	53543	63
TMS FFD 1.5-3	53544	55
TMS FFD 11-17	53545	55
TMS FFD 18-22	53546	55
TMS FFD 22-30	53547	55
TMS FFD 3-6	53548	55
TMS FFD 7-9	53549	55
TMS FFD 9-12	53550	55
TMS MORD15 10-20	53551	64
TMS MORD15 15-32	53552	64
TMS MORD15 4-13.5	53554	64
TMS MORD35 10-20	53555	64
TMS MORD35 15-32	53556	64
TMS MORD35 3-8	53557	64
TMS MORD35 4-13.5	53558	64
TMS SP 1.5-3	53559	57
TMS SP 10-19	53560	57
TMS SP 11-17	53561	57
TMS SP 18-22	53562	57
TMS SP 22-30	53563	57

Model	Part Number	Page
TMS SP 30-37	53564	57
TMS SP 3-6	53565	57
TMS SP 38-48	53566	57
TMS SP 3-9	53567	57
TMS SP 50-60	53568	57
TMS SP 62-74	53569	57
TMS SP 7-9	53570	57
TMS SP 9-12	53571	57
TMS V 1.5-3	53572	56
TMS V 3-6	53573	56
TMS V 3-9	53574	56
TMS V 7-9	53575	56
TMS V 9-12	53576	56
TMS VFD 10-19	53577	54
TMS VFD 11-17	53578	54
TMS VFD 18-22	53579	54
TMS VFD 22-30	53580	54
TMS VFD 3-12	53581	54
TMS VFD 9-12	53582	54
TPD 10	53583	02
TPD 10 EX	53584	02
TPD 10Q	53585	21
TPD 16	53586	02
TPD 16 EX	53587	02
TPD 16M2	53588	04
TPD 16M3	53589	04
TPD 16M4	53590	04
TPD 16M	53591	04
TPD 16Q	53592	21
TPD 24	53593	02
TPD 24 EX	53594	02
TPD 24-15	53595	03
TPD 24-90	53596	05
TPD 24M2	53598	03
TPD 24M3	53599	03



Model	Part Number	Page
TPD 24M	53606	03
TPD 24Q	53607	21
TPD CVR 24	53610	32
TPD ST 10	53620	71
TPD ST 16	53621	71
TPD ST 24	53622	71
TPD ST Q	53623	71
TPD H 10Q	53628	33
TPD H 16Q	53629	33
TPD H 24Q	53630	33
TPD H QQ	53631	33
TPD L2	53633	06
TPD L3	53634	06
TPD L4	53635	06
TPD L5	53636	06
TPD L2 EX	53637	06
TPD L3 EX	53638	06
TPD L4 EX	53639	06
TPD L5 EX	53640	06
TPD Q	53641	02
TPD Q EX	53642	02
TPD QQ	53643	21
TPD R 20	53646	22
TPD R 25	53648	22
TPD R 32	53650	22
TPD R 40	53652	23
TPD R 50	53654	24
TPD R 90 32	53662	25
TPD RH 25	53664	07
TPD RH 32	53665	07
TPD RH 63	53666	07
TPD RH 25 EX	53667	07
TPD RH 32 EX	53668	07
TPD RH 63 EX	53669	07
TPD RH50-90	53670	08

Model	Part Number	Page
TPD RST16 1.5-3	53683	72
TPD RST16 3-6	53684	72
TPD RST20 1.5-3	53685	72
TPD RST20 3-6	53686	72
TPD RST25 1.5-3	53687	72
TPD RST25 3-6	53688	72
TPD RST32 1.5-3	53689	72
TPD RST32 3-6	53690	72
TPD XL	53691	30
TGP EX	53695	11
TGP PB EX	53696	11
TPS 24/17	53701	46
TPS 24/18	53703	46
TPS 24/20	53705	46
TPS 24/26	53707	46
TPS 24/42	53709	46
TPS 24/48	53711	46
TPS D24/14	53716	40
TPS D24/15	53718	40
TPS D24/16	53720	40
TPS D24/17	53722	40
TPS D24/25	53724	40
TPS D24/32	53726	40
TPS D24/42	53728	40
TPS D24/14 EX	53734	40
TPS D24/15 EX	53736	40
TPS D24/16 EX	53738	40
TPS D24/17 EX	53740	40
TPS D24/25 EX	53742	40
TPS D24/32 EX	53744	40
TPS D24/42 EX	53746	40
TPS DRM M25/4	53761	43
TPS DRM M25/6	53763	43
TPS DRM M32/4	53765	43
TPS DRM M32/4-2	53766	43

Model	Part Number	Page
TPS DRM M32/7	53769	43
TPS DRM M40/8	53773	43
TPS DRM M50/10	53775	43
TPS DRM M50/12	53777	43
TPS DRM M50/19	53779	43
TPS DRM M63/13	53783	43
TPS DRM M63/14	53785	43
TPS DRM M63/35	53787	43
TPS DRM M25/6 EX	53793	43
TPS DRM M32/4 EX	53795	43
TPS DRM M32/4-2 EX	53796	43
TPS DRM M32/7 EX	53799	43
TPS DRM M40/8 EX	53801	43
TPS DRM M50/10 EX	53803	43
TPS DRM M50/12 EX	53805	43
TPS DRM M50/19 EX	53807	43
TPS DRM M63/13 EX	53811	43
TPS DRM M63/14 EX	53813	43
TPS DRM M63/35 EX	53815	43
TPS DRS 20	53821	42
TPS DRS 25	53823	42
TPS DRS 32	53825	42
TPS DRS 20 EX	53827	42
TPS DRS 25 EX	53829	42
TPS DRS 32 EX	53831	42
TPS DXL 72	53837	44
TPS DXL 72 EX	53843	44
TPS Q 17	53859	41
TPS Q 17 EX	53865	41
TPS RP 25	53895	45
TPS RP 32	53897	45
TPS RP 40	53899	45
TPS RP 50	53901	45
TPS RP 63	53903	45
TPS RP 25 EX	53908	45

Model	Part Number	Page
TPS RP 32 EX	53910	45
TPS RP 40 EX	53912	45
TPS RP 50 EX	53914	45
TPS RP 63 EX	53916	45
TSE BD35 14	53926	58
TSE BD35 20	53927	58
TSE BD35 22	53928	58
TSE T 10/100/M6	53929	70
TSE T 10/100/M8	53930	70
TSE T 10/150/M8	53931	70
TSE T 10/200/M6	53932	70
TSE T 10/200/M8	53933	70
TSE T 10/250/M6	53934	70
TSE T 10/300/M6	53935	70
TSE T 10/300/M8	53936	70
TSE T 10/400/M6	53937	70
TSE T 10/400/M8	53938	70
TSE T 10/500/M6	53939	70
TSE T 16/100/M6	53940	70
TSE T 16/100/M8	53941	70
TSE T 16/150/M6	53942	70
TSE T 16/150/M8	53943	70
TSE T 16/200/M6	53944	70
TSE T 16/200/M8	53945	70
TSE T 16/250/M8	53946	70
TSE T 16/300/M6	53947	70
TSE T 16/300/M8	53948	70
TSE T 16/350/M8	53949	70
TSE T 16/400/M8	53950	70
TSE T 16/500/M8	53951	70
TSE T 16/600/M8	53952	70
TSE T 25/100/M10	53953	70
TSE T 25/150/M10	53954	70
TSE T 25/200/M10	53955	70
TSE T 25/200/M8	53956	70

Model	Part Number	Page
TSE T 25/250/M8	53957	70
TSE T 25/300/M10	53958	70
TSE T 25/300/M8	53959	70
TSE T 25/350/M10	53960	70
TSE T 25/400/M8	53961	70
TSE T 25/500/M8	53962	70
TSE T 25/600/M8	53963	70
TSE T 6/100/M6	53964	70
TSE T 6/150/M6	53965	70
TSE T 6/200/M6	53966	70
TSE T 6/250/M6	53967	70
TSE T 6/300/M6	53968	70
TSE T 6/400/M6	53969	70
TSE T 6/500/M6	53970	70
TTD 10	53971	36
TTD 11	53972	36
TTD 12	53973	36
TTD 13	53974	36
TTD 14	53975	36
TTD 15	53976	36
TTD 16	53977	36
TTD 2	53978	36
TTD 3	53979	36
TTD 4	53980	36
TTD 5	53981	36
TTD 6	53982	36
TTD 7	53983	36
TTD 8	53984	36
TTD 9	53985	36
TTS 12	53986	47
TTS 16	53987	47
TTS 20	53988	47
TTS 9	53989	47
TTS 5	53990	47
TTD 7	53983	35

Model	Part Number	Page
TTD 8	53984	35
TTD 9	53985	35
TTS 12	53986	44
TTS 16	53987	44
TTS 20	53988	44
TTS 9	53989	44
TTS 5	53990	44





**TE.CO. S.p.A.**  
Via Achille Grandi, 1  
40013 Castel Maggiore  
(BO) Italy  
+39 051 6047311

[sales@tecoit.com](mailto:sales@tecoit.com)  
[www.tecoit.com](http://www.tecoit.com)